



ELECTRONIC COPY

LG792675437
Report verification at igi.org



May 4, 2026
IGI Report Number LG792675437
Description LABORATORY GROWN DIAMOND
Shape and Cutting Style CUSHION MODIFIED BRILLIANT
Measurements 8.68 X 6.07 X 4.25 MM
GRADING RESULTS
Carat Weight 2.04 CARATS
Color Grade FANCY VIVID PINK
Clarity Grade VS 1

May 4, 2026
IGI Report Number LG792675437
Description LABORATORY GROWN DIAMOND
Shape and Cutting Style CUSHION MODIFIED BRILLIANT
Measurements 8.68 X 6.07 X 4.25 MM

GRADING RESULTS

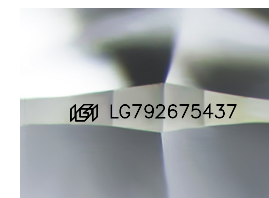
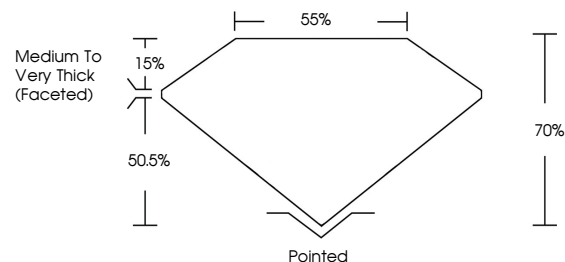
Carat Weight 2.04 CARATS
Color Grade FANCY VIVID PINK
Clarity Grade VS 1

ADDITIONAL GRADING INFORMATION

Polish EXCELLENT
Symmetry EXCELLENT
Fluorescence STRONG
Inscription(s) IGI LG792675437

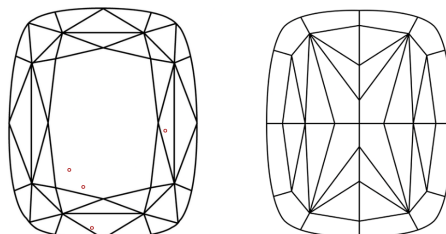
Comments: This Laboratory Grown Diamond was created by Chemical Vapor Deposition (CVD) growth process.
Indications of post-growth treatment.

PROPORTIONS



Sample Image Used

CLARITY CHARACTERISTICS



KEY TO SYMBOLS

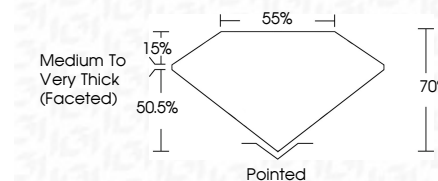
Red symbols indicate internal characteristics.
Green symbols indicate external characteristics.

COLOR

D E F G H I J Faint Very Light Light

CLARITY

FL IF VS 1-2 VS 2-3 SI 1-2 I 1-3
Flawless Internally Flawless Very Very Slightly Included Very Slightly Included Slightly Included Included



ADDITIONAL GRADING INFORMATION

Polish EXCELLENT
Symmetry EXCELLENT
Fluorescence STRONG
Inscription(s) IGI LG792675437
Comments: This Laboratory Grown Diamond was created by Chemical Vapor Deposition (CVD) growth process.
Indications of post-growth treatment.



May 4, 2026
IGI Report No LG792675437
CUSHION MODIFIED BRILLIANT
8.68 X 6.07 X 4.25 MM
2.04 CARATS
FANCY VIVID PINK
VS 1
Medium to Very Thick (Faceted)
Pointed
EXCELLENT
EXCELLENT
STRONG
IGI LG792675437
Comments: This Laboratory Grown Diamond was created by Chemical Vapor Deposition (CVD) growth process.
Indications of post-growth treatment.