



ELECTRONIC COPY

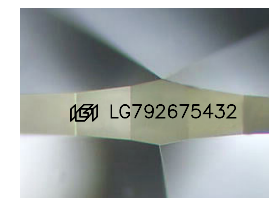
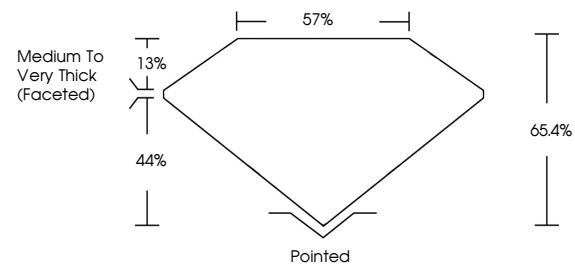
LG792675432 Report verification at igi.org



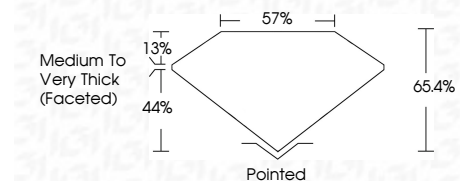
May 4, 2026 IGI Report Number LG792675432 Description LABORATORY GROWN DIAMOND Shape and Cutting Style OVAL BRILLIANT Measurements 9.92 X 6.41 X 4.19 MM GRADING RESULTS Carat Weight 2.02 CARATS Color Grade FANCY VIVID PINK Clarity Grade VVS 2

May 4, 2026 IGI Report Number LG792675432 Description LABORATORY GROWN DIAMOND Shape and Cutting Style OVAL BRILLIANT Measurements 9.92 X 6.41 X 4.19 MM

PROPORTIONS



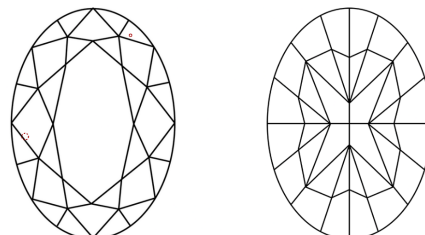
Sample Image Used



GRADING RESULTS

Carat Weight 2.02 CARATS Color Grade FANCY VIVID PINK Clarity Grade VVS 2

CLARITY CHARACTERISTICS



KEY TO SYMBOLS

Red symbols indicate internal characteristics. Green symbols indicate external characteristics.

COLOR

D E F G H I J Faint Very Light Light

CLARITY

FL IF VVS 1-2 VS 1-2 SI 1-2 I 1-3 Flawless Internally Flawless Very Very Slightly Included Very Slightly Included Slightly Included Included

ADDITIONAL GRADING INFORMATION

Polish EXCELLENT Symmetry EXCELLENT Fluorescence STRONG Inscription(s) (IGI) LG792675432 Comments: This Laboratory Grown Diamond was created by Chemical Vapor Deposition (CVD) growth process. Indications of post-growth treatment.

ADDITIONAL GRADING INFORMATION

Polish EXCELLENT Symmetry EXCELLENT Fluorescence STRONG Inscription(s) (IGI) LG792675432

Comments: This Laboratory Grown Diamond was created by Chemical Vapor Deposition (CVD) growth process. Indications of post-growth treatment.



May 4, 2026 IGI Report No LG792675432 OVAL BRILLIANT 2.02 CARATS FANCY VIVID PINK VVS 2 65.4% 57% Medium to Very Thick (Faceted) Pointed EXCELLENT EXCELLENT STRONG (IGI) LG792675432 Comments: This Laboratory Grown Diamond was created by Chemical Vapor Deposition (CVD) growth process. Indications of post-growth treatment.