



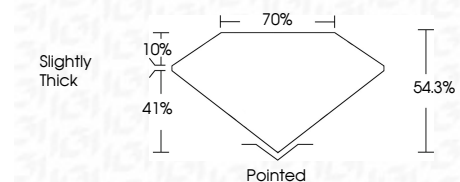
**ELECTRONIC COPY**

LG792672946  
Report verification at igi.org



May 8, 2026  
IGI Report Number **LG792672946**  
Description **LABORATORY GROWN DIAMOND**  
Shape and Cutting Style **LOZENGE STEP CUT**  
Measurements **11.58 X 8.55 X 4.64 MM**

**GRADING RESULTS**  
Carat Weight **2.08 CARATS**  
Color Grade **E**  
Clarity Grade **VVS 2**



**ADDITIONAL GRADING INFORMATION**  
Polish **EXCELLENT**  
Symmetry **VERY GOOD**  
Fluorescence **NONE**  
Inscription(s) **IGI LG792672946**  
Comments: This Laboratory Grown Diamond was created by Chemical Vapor Deposition (CVD) growth process. Type IIa



May 8, 2026  
IGI Report No LG792672946  
**LOZENGE STEP CUT**  
11.58 X 8.55 X 4.64 MM  
2.08 CARATS  
E  
VVS 2  
54.3%  
70%  
Slightly Thick  
Pointed  
EXCELLENT  
VERY GOOD  
NONE  
IGI LG792672946  
Comments: This Laboratory Grown Diamond was created by Chemical Vapor Deposition (CVD) growth process. Type IIa

**LABORATORY GROWN DIAMOND REPORT**

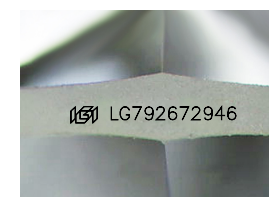
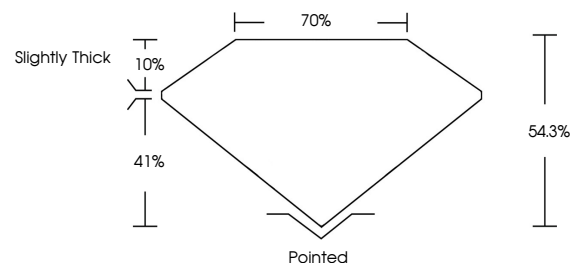
May 8, 2026  
IGI Report Number **LG792672946**  
Description **LABORATORY GROWN DIAMOND**  
Shape and Cutting Style **LOZENGE STEP CUT**  
Measurements **11.58 X 8.55 X 4.64 MM**

**GRADING RESULTS**  
Carat Weight **2.08 CARATS**  
Color Grade **E**  
Clarity Grade **VVS 2**

**ADDITIONAL GRADING INFORMATION**  
Polish **EXCELLENT**  
Symmetry **VERY GOOD**  
Fluorescence **NONE**  
Inscription(s) **IGI LG792672946**

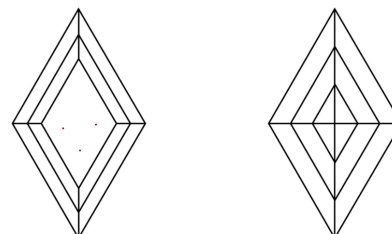
Comments: This Laboratory Grown Diamond was created by Chemical Vapor Deposition (CVD) growth process. Type IIa

**PROPORTIONS**



Sample Image Used

**CLARITY CHARACTERISTICS**



**KEY TO SYMBOLS**

Red symbols indicate internal characteristics.  
Green symbols indicate external characteristics.

**COLOR**

D E F G H I J Faint Very Light Light

**CLARITY**

FL	IF	VVS <sup>1-2</sup>	VS <sup>1-2</sup>	SI <sup>1-2</sup>	I <sup>1-3</sup>
Flawless	Internally Flawless	Very Very Slightly Included	Very Slightly Included	Slightly Included	Included

