



**ELECTRONIC COPY**

LG792672107  
Report verification at igi.org



April 30, 2026  
IGI Report Number **LG792672107**  
Description **LABORATORY GROWN DIAMOND**  
Shape and Cutting Style **CUSHION MODIFIED BRILLIANT**  
Measurements **12.96 X 9.20 X 6.25 MM**  
**GRADING RESULTS**  
Carat Weight **7.07 CARATS**  
Color Grade **FANCY VIVID GREEN**  
Clarity Grade **VS 2**

April 30, 2026  
IGI Report Number **LG792672107**  
Description **LABORATORY GROWN DIAMOND**  
Shape and Cutting Style **CUSHION MODIFIED BRILLIANT**  
Measurements **12.96 X 9.20 X 6.25 MM**

**GRADING RESULTS**

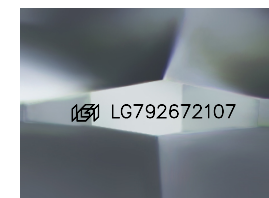
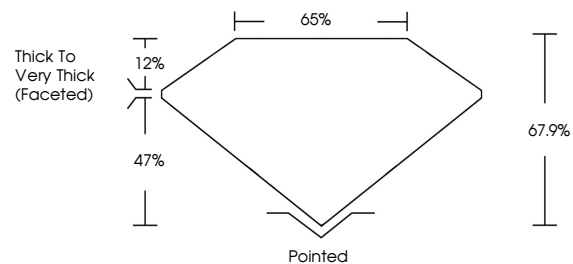
Carat Weight **7.07 CARATS**  
Color Grade **FANCY VIVID GREEN**  
Clarity Grade **VS 2**

**ADDITIONAL GRADING INFORMATION**

Polish **VERY GOOD**  
Symmetry **EXCELLENT**  
Fluorescence **SLIGHT**  
Inscription(s) **IGI LG792672107**

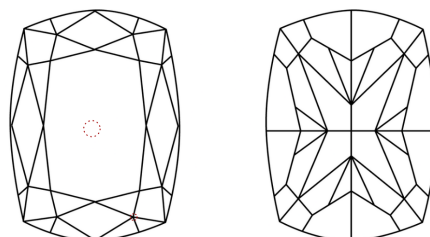
Comments: This Laboratory Grown Diamond was created by Chemical Vapor Deposition (CVD) growth process. Indications of post-growth treatment.

**PROPORTIONS**



Sample Image Used

**CLARITY CHARACTERISTICS**



**KEY TO SYMBOLS**

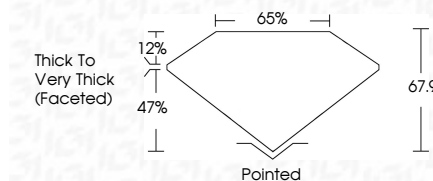
Red symbols indicate internal characteristics.  
Green symbols indicate external characteristics.

**COLOR**

D E F G H I J Faint Very Light Light

**CLARITY**

FL	IF	VS <sup>1-2</sup>	VS <sup>1-2</sup>	SI <sup>1-2</sup>	I <sup>1-3</sup>
Flawless	Internally Flawless	Very Very Slightly Included	Very Slightly Included	Slightly Included	Included



**ADDITIONAL GRADING INFORMATION**

Polish **VERY GOOD**  
Symmetry **EXCELLENT**  
Fluorescence **SLIGHT**  
Inscription(s) **IGI LG792672107**  
Comments: This Laboratory Grown Diamond was created by Chemical Vapor Deposition (CVD) growth process. Indications of post-growth treatment.



April 30, 2026  
IGI Report No LG792672107  
CUSHION MODIFIED BRILLIANT  
12.96 X 9.20 X 6.25 MM  
7.07 CARATS  
FANCY VIVID GREEN  
VS 2  
67.9%  
65%  
Thick to Very Thick (Faceted)  
Pointed  
VERY GOOD  
EXCELLENT  
SLIGHT  
IGI LG792672107  
Comments: This Laboratory Grown Diamond was created by Chemical Vapor Deposition (CVD) growth process. Indications of post-growth treatment.