



ELECTRONIC COPY

LG792671564
Report verification at igi.org



April 28, 2026

IGI Report Number **LG792671564**

Description **LABORATORY GROWN DIAMOND**

Shape and Cutting Style **EMERALD CUT**

Measurements **10.07 X 6.21 X 4.47 MM**

GRADING RESULTS

Carat Weight **3.01 CARATS**

Color Grade **FANCY INTENSE BLUE**

Clarity Grade **VS 2**

LABORATORY GROWN DIAMOND REPORT

April 28, 2026

IGI Report Number **LG792671564**

Description **LABORATORY GROWN DIAMOND**

Shape and Cutting Style **EMERALD CUT**

Measurements **10.07 X 6.21 X 4.47 MM**

GRADING RESULTS

Carat Weight **3.01 CARATS**

Color Grade **FANCY INTENSE BLUE**

Clarity Grade **VS 2**

ADDITIONAL GRADING INFORMATION

Polish **EXCELLENT**

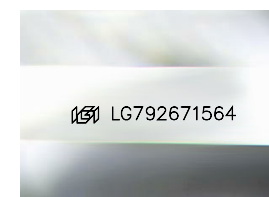
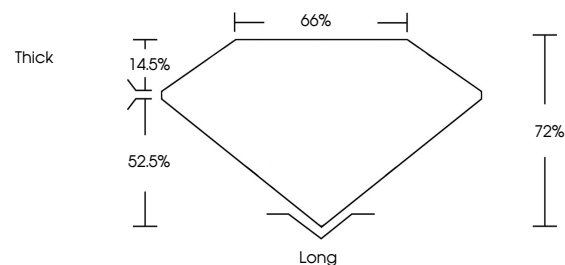
Symmetry **EXCELLENT**

Fluorescence **NONE**

Inscription(s) **IGI LG792671564**

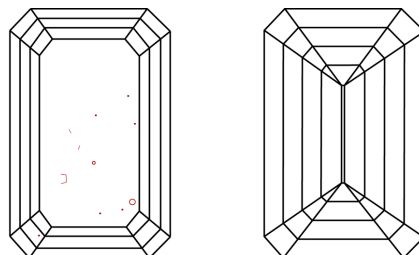
Comments: This Laboratory Grown Diamond was created by Chemical Vapor Deposition (CVD) growth process. Indications of post-growth treatment.

PROPORTIONS



Sample Image Used

CLARITY CHARACTERISTICS



KEY TO SYMBOLS

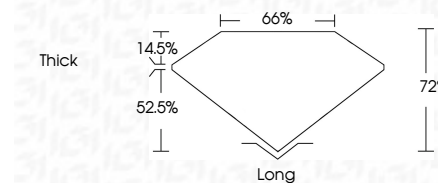
Red symbols indicate internal characteristics.
Green symbols indicate external characteristics.

COLOR

D E F G H I J Faint Very Light Light

CLARITY

FL	IF	VS ¹⁻²	VS ¹⁻²	SI ¹⁻²	I ¹⁻³
Flawless	Internally Flawless	Very Very Slightly Included	Very Slightly Included	Slightly Included	Included



ADDITIONAL GRADING INFORMATION

Polish **EXCELLENT**

Symmetry **EXCELLENT**

Fluorescence **NONE**

Inscription(s) **IGI LG792671564**

Comments: This Laboratory Grown Diamond was created by Chemical Vapor Deposition (CVD) growth process. Indications of post-growth treatment.



April 28, 2026	IGI Report No LG792671564	EMERALD CUT	3.01 CARATS	FANCY INTENSE BLUE	VS 2	72%	66%	Thick	Long	EXCELLENT	EXCELLENT	NONE	IGI LG792671564
10.07 X 6.21 X 4.47 MM	Color Grade	Clarity Grade	Depth	Table	Girdle	Culet	Polish	Symmetry	Fluorescence	Inscription(s)	Comments: This Laboratory Grown Diamond was created by Chemical Vapor Deposition (CVD) growth process. Indications of post-growth treatment.		