



ELECTRONIC COPY

LG792671552
Report verification at igi.org



April 28, 2026
IGI Report Number **LG792671552**
Description **LABORATORY GROWN DIAMOND**
Shape and Cutting Style **EMERALD CUT**
Measurements **6.56 X 4.73 X 3.24 MM**
GRADING RESULTS
Carat Weight **1.02 CARAT**
Color Grade **FANCY LIGHT YELLOW**
Clarity Grade **VVS 2**

April 28, 2026
IGI Report Number **LG792671552**
Description **LABORATORY GROWN DIAMOND**
Shape and Cutting Style **EMERALD CUT**
Measurements **6.56 X 4.73 X 3.24 MM**

GRADING RESULTS

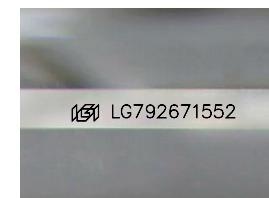
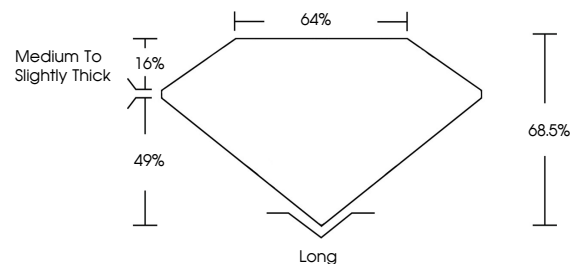
Carat Weight **1.02 CARAT**
Color Grade **FANCY LIGHT YELLOW**
Clarity Grade **VVS 2**

ADDITIONAL GRADING INFORMATION

Polish **EXCELLENT**
Symmetry **EXCELLENT**
Fluorescence **NONE**
Inscription(s) **IGI LG792671552**

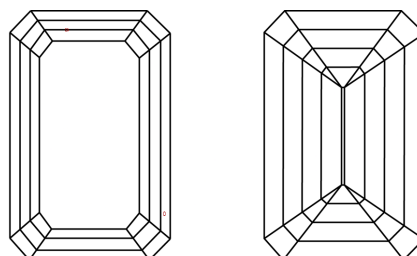
Comments: This Laboratory Grown Diamond was created by Chemical Vapor Deposition (CVD) growth process.

PROPORTIONS



Sample Image Used

CLARITY CHARACTERISTICS



KEY TO SYMBOLS

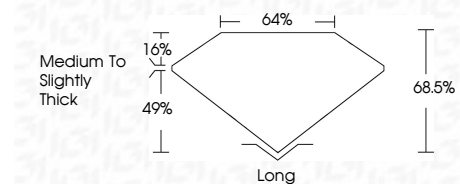
Red symbols indicate internal characteristics.
Green symbols indicate external characteristics.

COLOR

D E F G H I J Faint Very Light Light

CLARITY

FL	IF	VVS ¹⁻²	VS ¹⁻²	SI ¹⁻²	I ¹⁻³
Flawless	Internally Flawless	Very Very Slightly Included	Very Slightly Included	Slightly Included	Included



ADDITIONAL GRADING INFORMATION

Polish **EXCELLENT**
Symmetry **EXCELLENT**
Fluorescence **NONE**
Inscription(s) **IGI LG792671552**
Comments: This Laboratory Grown Diamond was created by Chemical Vapor Deposition (CVD) growth process.



IGI



April 28, 2026
IGI Report No **LG792671552**
EMERALD CUT
6.56 X 4.73 X 3.24 MM
1.02 CARAT
FANCY LIGHT YELLOW
VVS 2
68.5%
49%
1.6%
Medium to Slightly Thick
Long
EXCELLENT
EXCELLENT
NONE
IGI LG792671552
Comments: This Laboratory Grown Diamond was created by Chemical Vapor Deposition (CVD) growth process.