



ELECTRONIC COPY

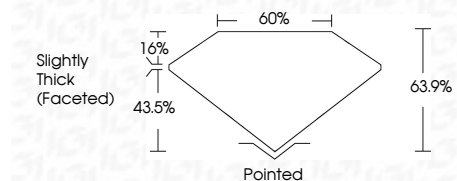
LG792670786
Report verification at igi.org



April 28, 2026
IGI Report Number **LG792670786**
Description **LABORATORY GROWN DIAMOND**
Shape and Cutting Style **ROUND MODIFIED BRILLIANT**
Measurements **7.75 - 7.76 X 4.96 MM**

GRADING RESULTS

Carat Weight **2.03 CARATS**
Color Grade **D**
Clarity Grade **VVS 2**



ADDITIONAL GRADING INFORMATION

Polish **EXCELLENT**
Symmetry **EXCELLENT**
Fluorescence **NONE**
Inscription(s) **IGI LG792670786**
Comments: This Laboratory Grown Diamond was created by Chemical Vapor Deposition (CVD) growth process. Type IIa



IGI

April 28, 2026
IGI Report No LG792670786
ROUND MODIFIED BRILLIANT
2.03 CARATS
D
Carat Weight
Color Grade
Clarity Grade
Depth
Table
Girdle
Slightly Thick (Faceted)
Pointed
EXCELLENT
EXCELLENT
NONE
IGI LG792670786
Comments: This Laboratory Grown Diamond was created by Chemical Vapor Deposition (CVD) growth process. Type IIa

LABORATORY GROWN DIAMOND REPORT

April 28, 2026
IGI Report Number **LG792670786**
Description **LABORATORY GROWN DIAMOND**
Shape and Cutting Style **ROUND MODIFIED BRILLIANT**
Measurements **7.75 - 7.76 X 4.96 MM**

GRADING RESULTS

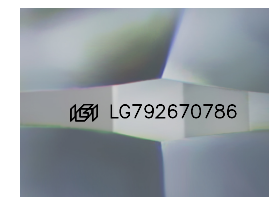
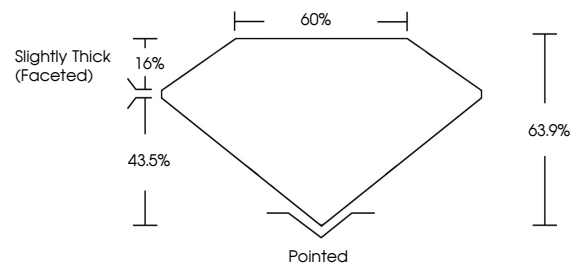
Carat Weight **2.03 CARATS**
Color Grade **D**
Clarity Grade **VVS 2**

ADDITIONAL GRADING INFORMATION

Polish **EXCELLENT**
Symmetry **EXCELLENT**
Fluorescence **NONE**
Inscription(s) **IGI LG792670786**

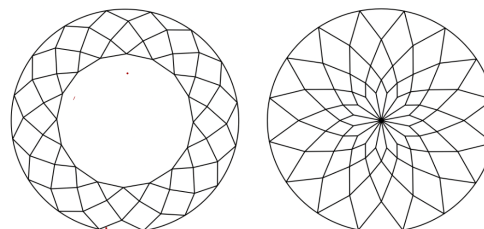
Comments: This Laboratory Grown Diamond was created by Chemical Vapor Deposition (CVD) growth process. Type IIa

PROPORTIONS



Sample Image Used

CLARITY CHARACTERISTICS



KEY TO SYMBOLS

Red symbols indicate internal characteristics.
Green symbols indicate external characteristics.

COLOR

D E F G H I J Faint Very Light Light

CLARITY

FL	IF	VVS ¹⁻²	VS ¹⁻²	SI ¹⁻²	I ¹⁻³
Flawless	Internally Flawless	Very Very Slightly Included	Very Slightly Included	Slightly Included	Included

