



**ELECTRONIC COPY**

LG792670497  
Report verification at igi.org



May 22, 2026

IGI Report Number **LG792670497**

Description **LABORATORY GROWN DIAMOND**

Shape and Cutting Style **CUT CORNERED  
RECTANGULAR MODIFIED  
BRILLIANT**

Measurements **15.31 X 10.03 X 6.60 MM**

**GRADING RESULTS**

Carat Weight **10.06 CARATS**

Color Grade **FANCY INTENSE YELLOW**

Clarity Grade **VS 1**

May 22, 2026

IGI Report Number **LG792670497**

Description **LABORATORY GROWN DIAMOND**

Shape and Cutting Style **CUT CORNERED RECTANGULAR  
MODIFIED BRILLIANT**

Measurements **15.31 X 10.03 X 6.60 MM**

**GRADING RESULTS**

Carat Weight **10.06 CARATS**

Color Grade **FANCY INTENSE YELLOW**

Clarity Grade **VS 1**

**ADDITIONAL GRADING INFORMATION**

Polish **EXCELLENT**

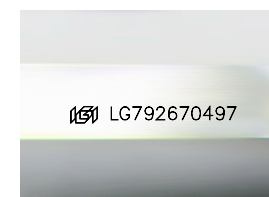
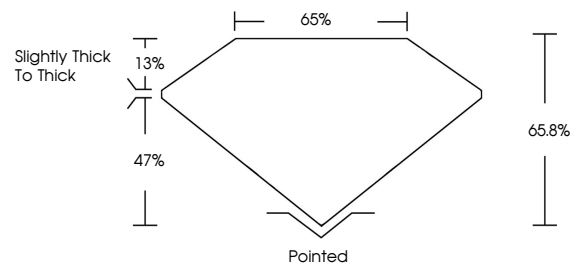
Symmetry **EXCELLENT**

Fluorescence **NONE**

Inscription(s) **IGI LG792670497**

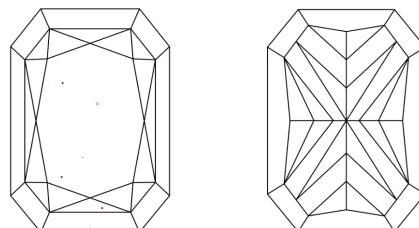
Comments: This Laboratory Grown Diamond was created by Chemical Vapor Deposition (CVD) growth process.

**PROPORTIONS**



Sample Image Used

**CLARITY CHARACTERISTICS**



**KEY TO SYMBOLS**

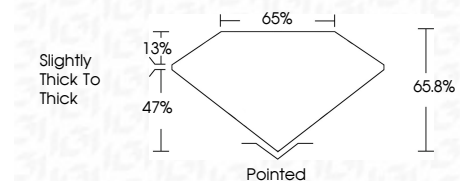
Red symbols indicate internal characteristics.  
Green symbols indicate external characteristics.

**COLOR**

D E F G H I J Faint Very Light Light

**CLARITY**

FL	IF	VS <sup>1-2</sup>	VS <sup>1-2</sup>	SI <sup>1-2</sup>	I <sup>1-3</sup>
Flawless	Internally Flawless	Very Very Slightly Included	Very Slightly Included	Slightly Included	Included



**ADDITIONAL GRADING INFORMATION**

Polish **EXCELLENT**

Symmetry **EXCELLENT**

Fluorescence **NONE**

Inscription(s) **IGI LG792670497**

Comments: This Laboratory Grown Diamond was created by Chemical Vapor Deposition (CVD) growth process.



**IGI**



May 22, 2026  
IGI Report No LG792670497  
CUT CORNERED RECT. MODIFIED BRILLIANT  
15.31 X 10.03 X 6.60 MM  
Carat Weight 10.06 CARATS  
Color Grade FANCY INTENSE YELLOW  
Clarity Grade VS 1  
Depth 47%  
Table 13%  
Girdle Slightly thick to thick  
Culet Pointed  
Polish EXCELLENT  
Symmetry EXCELLENT  
Fluorescence NONE  
Inscription(s) IGI LG792670497  
Comments: This Laboratory Grown Diamond was created by Chemical Vapor Deposition (CVD) growth process.