



ELECTRONIC COPY

LG792670492
Report verification at igi.org



May 20, 2026
IGI Report Number **LG792670492**
Description **LABORATORY GROWN DIAMOND**
Shape and Cutting Style **CUT CORNERED
RECTANGULAR MODIFIED
BRILLIANT**
Measurements **11.81 X 8.07 X 5.48 MM**
GRADING RESULTS
Carat Weight **5.05 CARATS**
Color Grade **FANCY VIVID YELLOW**
Clarity Grade **SI 1**

May 20, 2026
IGI Report Number **LG792670492**
Description **LABORATORY GROWN DIAMOND**
Shape and Cutting Style **CUT CORNERED RECTANGULAR
MODIFIED BRILLIANT**
Measurements **11.81 X 8.07 X 5.48 MM**

GRADING RESULTS

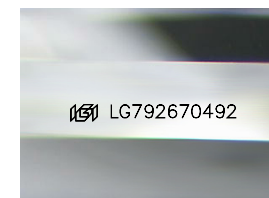
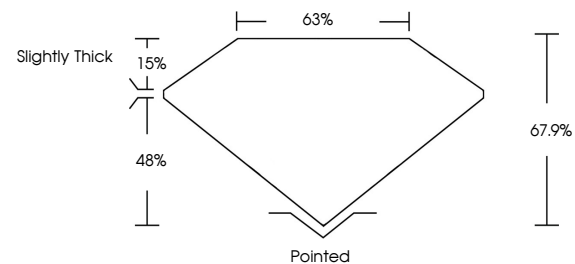
Carat Weight **5.05 CARATS**
Color Grade **FANCY VIVID YELLOW**
Clarity Grade **SI 1**

ADDITIONAL GRADING INFORMATION

Polish **EXCELLENT**
Symmetry **EXCELLENT**
Fluorescence **NONE**
Inscription(s) **IGI LG792670492**

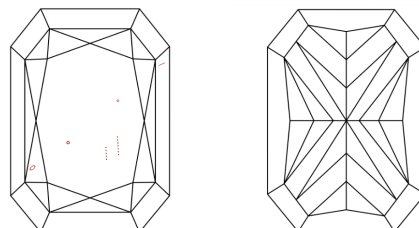
Comments: This Laboratory Grown Diamond was created by Chemical Vapor Deposition (CVD) growth process.

PROPORTIONS



Sample Image Used

CLARITY CHARACTERISTICS



KEY TO SYMBOLS

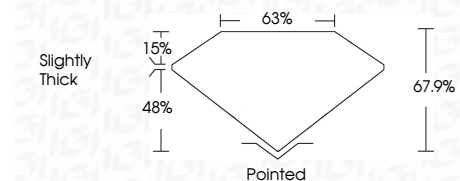
Red symbols indicate internal characteristics.
Green symbols indicate external characteristics.

COLOR

D E F G H I J Faint Very Light Light

CLARITY

FL	IF	VS ¹⁻²	VS ¹⁻²	SI ¹⁻²	I ¹⁻³
Flawless	Internally Flawless	Very Very Slightly Included	Very Slightly Included	Slightly Included	Included



ADDITIONAL GRADING INFORMATION

Polish **EXCELLENT**
Symmetry **EXCELLENT**
Fluorescence **NONE**
Inscription(s) **IGI LG792670492**
Comments: This Laboratory Grown Diamond was created by Chemical Vapor Deposition (CVD) growth process.



May 20, 2026
IGI Report No LG792670492
CUT CORNERED RECT. MODIFIED BRILLIANT
11.81 X 8.07 X 5.48 MM
5.05 CARATS
FANCY VIVID YELLOW
SI 1
67.9%
63%
Slightly Thick
Pointed
EXCELLENT
EXCELLENT
NONE
IGI LG792670492
Comments: This Laboratory Grown Diamond was created by Chemical Vapor Deposition (CVD) growth process.