



ELECTRONIC COPY

LG792670189
Report verification at igi.org



May 7, 2026
IGI Report Number LG792670189
Description LABORATORY GROWN DIAMOND
Shape and Cutting Style SQUARE CUSHION MODIFIED BRILLIANT
Measurements 8.53 X 8.14 X 5.00 MM
GRADING RESULTS
Carat Weight 3.00 CARATS
Color Grade G
Clarity Grade VS 1

LABORATORY GROWN DIAMOND REPORT

May 7, 2026
IGI Report Number LG792670189
Description LABORATORY GROWN DIAMOND
Shape and Cutting Style SQUARE CUSHION MODIFIED BRILLIANT
Measurements 8.53 X 8.14 X 5.00 MM

GRADING RESULTS

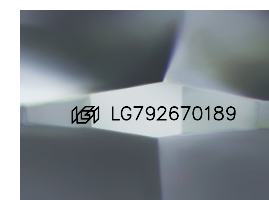
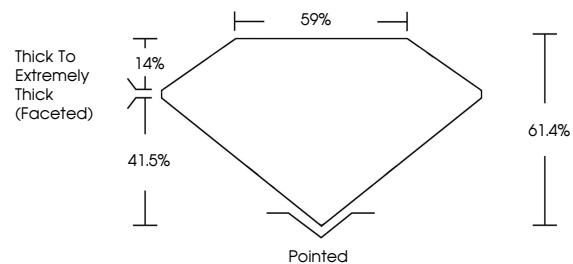
Carat Weight 3.00 CARATS
Color Grade G
Clarity Grade VS 1

ADDITIONAL GRADING INFORMATION

Polish EXCELLENT
Symmetry EXCELLENT
Fluorescence NONE
Inscription(s) IGI LG792670189

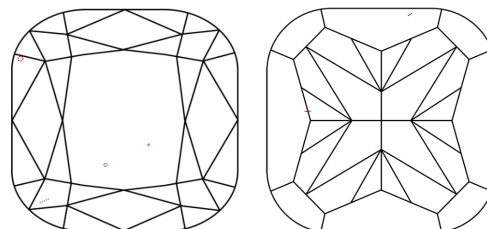
Comments: This Laboratory Grown Diamond was created by Chemical Vapor Deposition (CVD) growth process. Type IIa

PROPORTIONS



Sample Image Used

CLARITY CHARACTERISTICS



KEY TO SYMBOLS

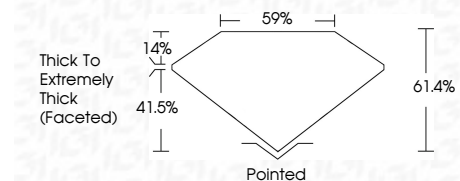
Red symbols indicate internal characteristics.
Green symbols indicate external characteristics.

COLOR

D E F G H I J Faint Very Light Light

CLARITY

Table with columns: FL, IF, VS 1-2, VS 1-2, SI 1-2, I 1-3 and corresponding descriptions: Flawless, Internally Flawless, Very Very Slightly Included, Very Slightly Included, Slightly Included, Included



ADDITIONAL GRADING INFORMATION

Polish EXCELLENT
Symmetry EXCELLENT
Fluorescence NONE
Inscription(s) IGI LG792670189
Comments: This Laboratory Grown Diamond was created by Chemical Vapor Deposition (CVD) growth process. Type IIa



May 7, 2026
IGI Report No. LG792670189
SQUARE CUSHION MODIFIED BRILLIANT
3.00 CARATS G
8.53 X 8.14 X 5.00 MM
Carat Weight 3.00 CARATS
Color Grade G
Clarity Grade VS 1
Depth 61.4%
Table 59%
Girdle Thick To Extremely Thick (Faceted)
Culet Pointed
Polish EXCELLENT
Symmetry EXCELLENT
Fluorescence NONE
Inscription(s) IGI LG792670189
Comments: This Laboratory Grown Diamond was created by Chemical Vapor Deposition (CVD) growth process. Type IIa