



**ELECTRONIC COPY**

LG792667766  
Report verification at igi.org



April 24, 2026  
IGI Report Number **LG792667766**  
Description **LABORATORY GROWN DIAMOND**  
Shape and Cutting Style **CUSHION MODIFIED BRILLIANT**  
Measurements **10.00 X 8.41 X 5.57 MM**  
**GRADING RESULTS**  
Carat Weight **4.24 CARATS**  
Color Grade **FANCY VIVID YELLOW**  
Clarity Grade **VVS 2**

**LABORATORY GROWN DIAMOND REPORT**

April 24, 2026  
IGI Report Number **LG792667766**  
Description **LABORATORY GROWN DIAMOND**  
Shape and Cutting Style **CUSHION MODIFIED BRILLIANT**  
Measurements **10.00 X 8.41 X 5.57 MM**

**GRADING RESULTS**

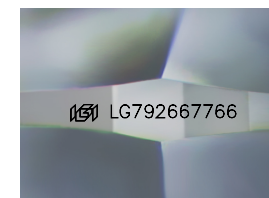
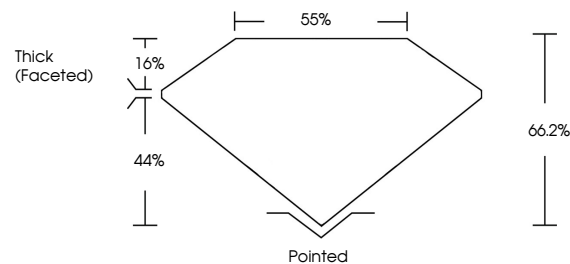
Carat Weight **4.24 CARATS**  
Color Grade **FANCY VIVID YELLOW**  
Clarity Grade **VVS 2**

**ADDITIONAL GRADING INFORMATION**

Polish **EXCELLENT**  
Symmetry **EXCELLENT**  
Fluorescence **NONE**  
Inscription(s) **IGI LG792667766**

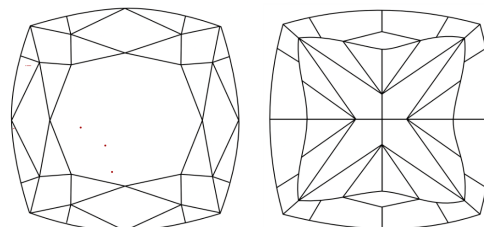
Comments: This Laboratory Grown Diamond was created by Chemical Vapor Deposition (CVD) growth process.

**PROPORTIONS**



Sample Image Used

**CLARITY CHARACTERISTICS**



**KEY TO SYMBOLS**

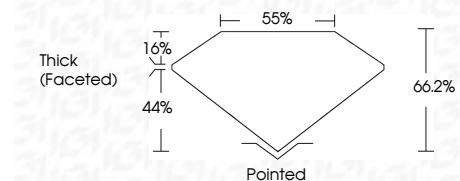
Red symbols indicate internal characteristics.  
Green symbols indicate external characteristics.

**COLOR**

D E F G H I J Faint Very Light Light

**CLARITY**

FL	IF	VVS <sup>1-2</sup>	VS <sup>1-2</sup>	SI <sup>1-2</sup>	I <sup>1-3</sup>
Flawless	Internally Flawless	Very Very Slightly Included	Very Slightly Included	Slightly Included	Included



**ADDITIONAL GRADING INFORMATION**

Polish **EXCELLENT**  
Symmetry **EXCELLENT**  
Fluorescence **NONE**  
Inscription(s) **IGI LG792667766**  
Comments: This Laboratory Grown Diamond was created by Chemical Vapor Deposition (CVD) growth process.



April 24, 2026  
IGI Report No LG792667766  
CUSHION MODIFIED BRILLIANT  
4.24 CARATS  
Carat Weight  
Color Grade FANCY VIVID YELLOW  
Clarity Grade VVS 2  
Depth 66.2%  
Table 85%  
Girdle Thick (Faceted)  
Culet Pointed  
Polish EXCELLENT  
Symmetry EXCELLENT  
Fluorescence NONE  
Inscription(s) IGI LG792667766  
Comments: This Laboratory Grown Diamond was created by Chemical Vapor Deposition (CVD) growth process.