



ELECTRONIC COPY

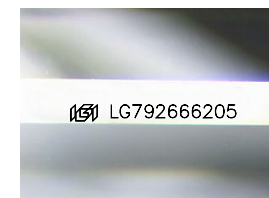
LG792666205
Report verification at igi.org



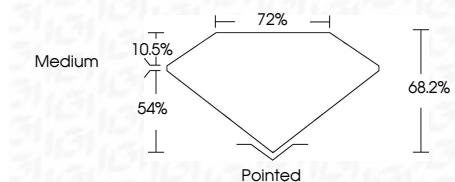
May 14, 2026
IGI Report Number **LG792666205**
Description **LABORATORY GROWN DIAMOND**
Shape and Cutting Style **PRINCESS CUT**
Measurements **6.33 X 6.28 X 4.28 MM**

GRADING RESULTS

Carat Weight **1.52 CARAT**
Color Grade **D**
Clarity Grade **VVS 2**



Sample Image Used



ADDITIONAL GRADING INFORMATION

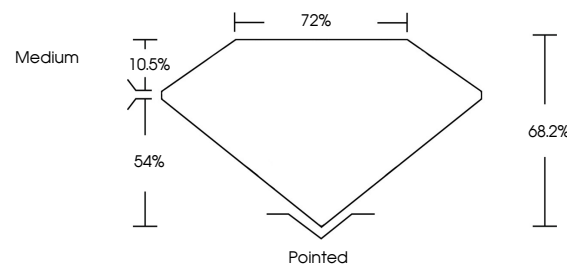
Polish **EXCELLENT**
Symmetry **EXCELLENT**
Fluorescence **NONE**
Inscription(s) **(IGI) LG792666205**
Comments: As Grown - No indication of post-growth treatment.
This Laboratory Grown Diamond was created by High Pressure High Temperature (HPHT) growth process.
Type II



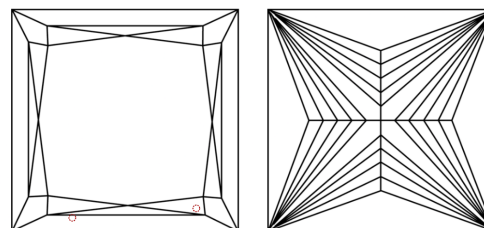
May 14, 2026
IGI Report No LG792666205
PRINCESS CUT
6.33 X 6.28 X 4.28 MM
1.52 CARAT
Color Grade **D**
Clarity Grade **VVS 2**
Depth **68.2%**
Table **72%**
Girdle **Medium**
Culet **Pointed**
Polish **EXCELLENT**
Symmetry **EXCELLENT**
Fluorescence **NONE**
Inscription(s) **(IGI) LG792666205**
Comments: As Grown - No indication of post-growth treatment.
This Laboratory Grown Diamond was created by High Pressure High Temperature (HPHT) growth process.
Type II



PROPORTIONS



CLARITY CHARACTERISTICS



KEY TO SYMBOLS

Red symbols indicate internal characteristics.
Green symbols indicate external characteristics.

COLOR

D E F G H I J Faint Very Light Light

CLARITY

FL	IF	VVS ¹⁻²	VS ¹⁻²	SI ¹⁻²	I ¹⁻³
Flawless	Internally Flawless	Very Very Slightly Included	Very Slightly Included	Slightly Included	Included