



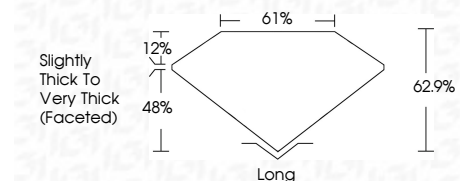
**ELECTRONIC COPY**

LG792665411  
Report verification at igi.org



May 13, 2026  
IGI Report Number **LG792665411**  
Description **LABORATORY GROWN DIAMOND**  
Shape and Cutting Style **CUSHION MIXED CUT**  
Measurements **8.43 X 5.85 X 3.68 MM**

**GRADING RESULTS**  
Carat Weight **1.59 CARAT**  
Color Grade **F**  
Clarity Grade **VS 1**



**ADDITIONAL GRADING INFORMATION**  
Polish **EXCELLENT**  
Symmetry **EXCELLENT**  
Fluorescence **NONE**  
Inscription(s) **IGI LG792665411**  
Comments: This Laboratory Grown Diamond was created by Chemical Vapor Deposition (CVD) growth process. Type IIa



May 13, 2026  
IGI Report No LG792665411  
**CUSHION MIXED CUT**  
8.43 X 5.85 X 3.68 MM  
1.59 CARAT  
F  
VS 1  
62.9%  
61%  
Slightly Thick To Very Thick (Faceted)  
Long  
EXCELLENT  
EXCELLENT  
NONE  
IGI LG792665411  
Comments: This Laboratory Grown Diamond was created by Chemical Vapor Deposition (CVD) growth process. Type IIa

**LABORATORY GROWN DIAMOND REPORT**

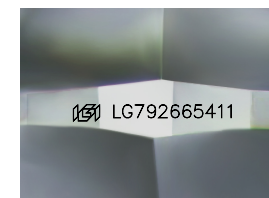
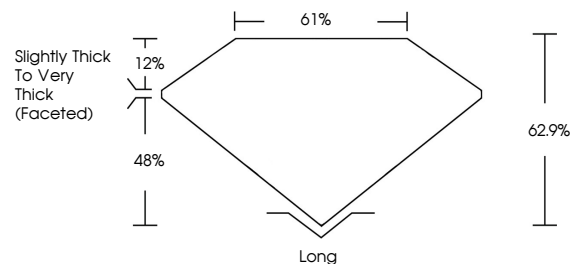
May 13, 2026  
IGI Report Number **LG792665411**  
Description **LABORATORY GROWN DIAMOND**  
Shape and Cutting Style **CUSHION MIXED CUT**  
Measurements **8.43 X 5.85 X 3.68 MM**

**GRADING RESULTS**  
Carat Weight **1.59 CARAT**  
Color Grade **F**  
Clarity Grade **VS 1**

**ADDITIONAL GRADING INFORMATION**  
Polish **EXCELLENT**  
Symmetry **EXCELLENT**  
Fluorescence **NONE**  
Inscription(s) **IGI LG792665411**

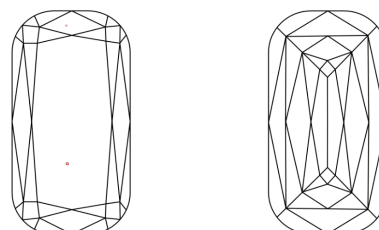
Comments: This Laboratory Grown Diamond was created by Chemical Vapor Deposition (CVD) growth process. Type IIa

**PROPORTIONS**



Sample Image Used

**CLARITY CHARACTERISTICS**



**KEY TO SYMBOLS**

Red symbols indicate internal characteristics.  
Green symbols indicate external characteristics.

**COLOR**

D E F G H I J Faint Very Light Light

**CLARITY**

FL	IF	VS <sup>1-2</sup>	VS <sup>1-2</sup>	SI <sup>1-2</sup>	I <sup>1-3</sup>
Flawless	Internally Flawless	Very Very Slightly Included	Very Slightly Included	Slightly Included	Included

