



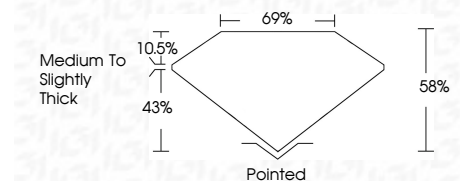
ELECTRONIC COPY

LG792665344
Report verification at igi.org



May 14, 2026
IGI Report Number **LG792665344**
Description **LABORATORY GROWN DIAMOND**
Shape and Cutting Style **HALF MOON BRILLIANT**
Measurements **10.56 X 7.04 X 4.08 MM**

GRADING RESULTS
Carat Weight **2.02 CARATS**
Color Grade **F**
Clarity Grade **VVS 2**



ADDITIONAL GRADING INFORMATION
Polish **EXCELLENT**
Symmetry **EXCELLENT**
Fluorescence **NONE**
Inscription(s) **(IGI) LG792665344**
Comments: This Laboratory Grown Diamond was created by Chemical Vapor Deposition (CVD) growth process. Type IIa



May 14, 2026
IGI Report No LG792665344
HALF MOON BRILLIANT
2.02 CARATS
F
2.02 CARATS
Color Grade **F**
Clarity Grade **VVS 2**
Depth **69%**
Table **10.56**
Girdle **Medium to Slightly Thick**
Culet **Pointed**
Polish **EXCELLENT**
Symmetry **EXCELLENT**
Fluorescence **NONE**
Inscription(s) **(IGI) LG792665344**
Comments: This Laboratory Grown Diamond was created by Chemical Vapor Deposition (CVD) growth process. Type IIa

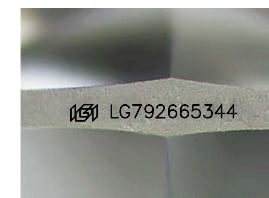
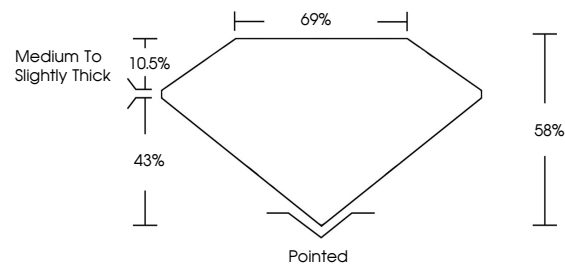
May 14, 2026
IGI Report Number **LG792665344**
Description **LABORATORY GROWN DIAMOND**
Shape and Cutting Style **HALF MOON BRILLIANT**
Measurements **10.56 X 7.04 X 4.08 MM**

GRADING RESULTS
Carat Weight **2.02 CARATS**
Color Grade **F**
Clarity Grade **VVS 2**

ADDITIONAL GRADING INFORMATION
Polish **EXCELLENT**
Symmetry **EXCELLENT**
Fluorescence **NONE**
Inscription(s) **(IGI) LG792665344**

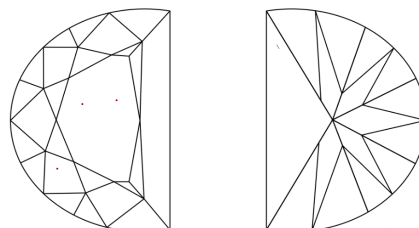
Comments: This Laboratory Grown Diamond was created by Chemical Vapor Deposition (CVD) growth process. Type IIa

PROPORTIONS



Sample Image Used

CLARITY CHARACTERISTICS



KEY TO SYMBOLS

Red symbols indicate internal characteristics.
Green symbols indicate external characteristics.

COLOR

D E F G H I J Faint Very Light Light

CLARITY

FL	IF	VVS ¹⁻²	VS ¹⁻²	SI ¹⁻²	I ¹⁻³
Flawless	Internally Flawless	Very Very Slightly Included	Very Slightly Included	Slightly Included	Included

