



ELECTRONIC COPY

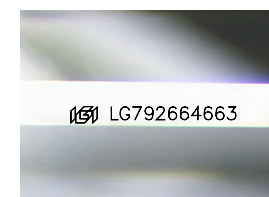
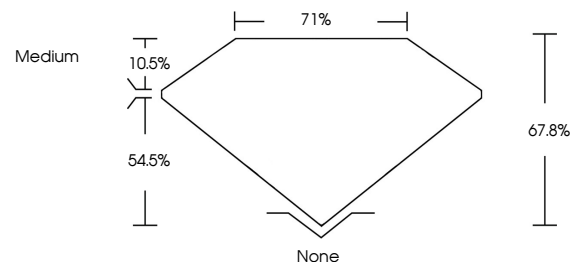
LG792664663
Report verification at igi.org



May 13, 2026
IGI Report Number **LG792664663**
Description **LABORATORY GROWN DIAMOND**
Shape and Cutting Style **PRINCESS CUT**
Measurements **9.99 X 9.89 X 6.71 MM**
GRADING RESULTS
Carat Weight **5.81 CARATS**
Color Grade **FANCY INTENSE PINK**
Clarity Grade **VS 1**

May 13, 2026
IGI Report Number **LG792664663**
Description **LABORATORY GROWN DIAMOND**
Shape and Cutting Style **PRINCESS CUT**
Measurements **9.99 X 9.89 X 6.71 MM**

PROPORTIONS

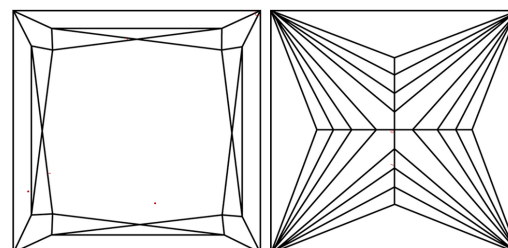


Sample Image Used

GRADING RESULTS

Carat Weight **5.81 CARATS**
Color Grade **FANCY INTENSE PINK**
Clarity Grade **VS 1**

CLARITY CHARACTERISTICS



KEY TO SYMBOLS

Red symbols indicate internal characteristics.
Green symbols indicate external characteristics.

ADDITIONAL GRADING INFORMATION

Polish **EXCELLENT**
Symmetry **EXCELLENT**
Fluorescence **SLIGHT**
Inscription(s) **IGI LG792664663**

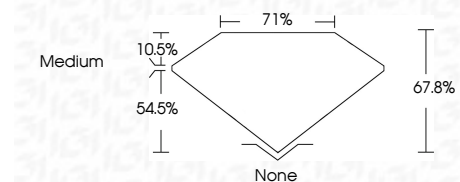
Comments: This Laboratory Grown Diamond was created by Chemical Vapor Deposition (CVD) growth process.
Indications of post-growth treatment.

COLOR

D E F G H I J Faint Very Light Light

CLARITY

FL	IF	VS ¹⁻²	VS ¹⁻²	SI ¹⁻²	I ¹⁻³
Flawless	Internally Flawless	Very Very Slightly Included	Very Slightly Included	Slightly Included	Included



ADDITIONAL GRADING INFORMATION

Polish **EXCELLENT**
Symmetry **EXCELLENT**
Fluorescence **SLIGHT**
Inscription(s) **IGI LG792664663**
Comments: This Laboratory Grown Diamond was created by Chemical Vapor Deposition (CVD) growth process.
Indications of post-growth treatment.



May 13, 2026
IGI Report No LG792664663
PRINCESS CUT
5.81 CARATS
FANCY INTENSE PINK
Color Grade
Clarity Grade **VS 1**
Depth **67.8%**
Table **71%**
Girdle **Medium**
Culet **None**
Polish **EXCELLENT**
Symmetry **EXCELLENT**
Fluorescence **SLIGHT**
Inscription(s) **IGI LG792664663**
Comments: This Laboratory Grown Diamond was created by Chemical Vapor Deposition (CVD) growth process.
Indications of post-growth treatment.