



ELECTRONIC COPY

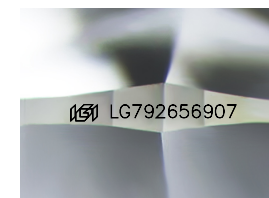
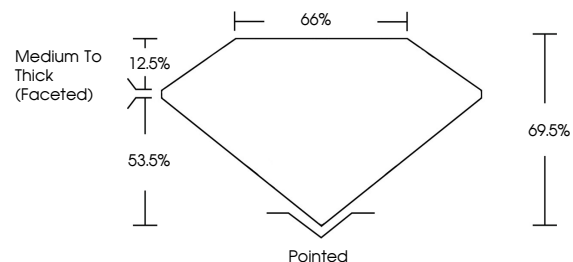
LG792656907
Report verification at igi.org



May 15, 2026
IGI Report Number **LG792656907**
Description **LABORATORY GROWN DIAMOND**
Shape and Cutting Style **CUSHION MODIFIED BRILLIANT**
Measurements **9.33 X 6.59 X 4.58 MM**
GRADING RESULTS
Carat Weight **2.51 CARATS**
Color Grade **D**
Clarity Grade **VVS 2**

May 15, 2026
IGI Report Number **LG792656907**
Description **LABORATORY GROWN DIAMOND**
Shape and Cutting Style **CUSHION MODIFIED BRILLIANT**
Measurements **9.33 X 6.59 X 4.58 MM**

PROPORTIONS

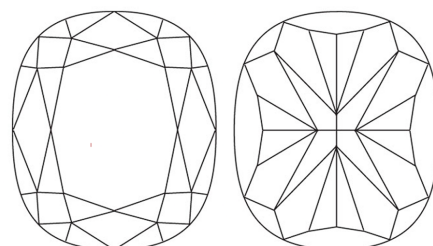


Sample Image Used

GRADING RESULTS

Carat Weight **2.51 CARATS**
Color Grade **D**
Clarity Grade **VVS 2**

CLARITY CHARACTERISTICS



ADDITIONAL GRADING INFORMATION

Polish **EXCELLENT**
Symmetry **EXCELLENT**
Fluorescence **NONE**
Inscription(s) **IGI LG792656907**

Comments: This Laboratory Grown Diamond was created by Chemical Vapor Deposition (CVD) growth process. Type IIa

KEY TO SYMBOLS

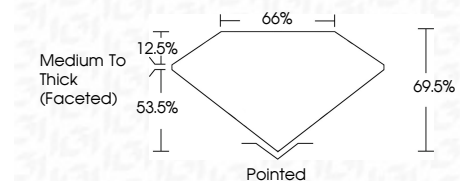
Red symbols indicate internal characteristics.
Green symbols indicate external characteristics.

COLOR

D E F G H I J Faint Very Light Light

CLARITY

FL	IF	VVS ¹⁻²	VS ¹⁻²	SI ¹⁻²	I ¹⁻³
Flawless	Internally Flawless	Very Very Slightly Included	Very Slightly Included	Slightly Included	Included



ADDITIONAL GRADING INFORMATION

Polish **EXCELLENT**
Symmetry **EXCELLENT**
Fluorescence **NONE**
Inscription(s) **IGI LG792656907**
Comments: This Laboratory Grown Diamond was created by Chemical Vapor Deposition (CVD) growth process. Type IIa



May 15, 2026
IGI Report No LG792656907
CUSHION MODIFIED BRILLIANT
9.33 X 6.59 X 4.58 MM
2.51 CARATS
D
VVS 2
69.5%
53.5%
Medium To Thick (Faceted)
Pointed
EXCELLENT
EXCELLENT
NONE
IGI LG792656907
Comments: This Laboratory Grown Diamond was created by Chemical Vapor Deposition (CVD) growth process. Type IIa