



April 20, 2026

IGI Report Number **LG792655718**

**OVAL BRILLIANT
LABORATORY GROWN DIAMOND
6.99 X 4.64 X 2.81 MM**

Carat Weight **0.56 CARAT**
Color Grade **D**
Clarity Grade **I.F.**
Polish **EXCELLENT**
Symmetry **EXCELLENT**
Fluorescence **NONE**
Inscription(s) **IGI LG792655718**

Comments: As Grown - No indication of post-growth treatment. This Laboratory Grown Diamond was created by High Pressure High Temperature (HPHT) growth process. Type II

LABORATORY GROWN DIAMOND REPORT

April 20, 2026
IGI Report Number **LG792655718**
Description **LABORATORY GROWN DIAMOND**
Shape and Cutting Style **OVAL BRILLIANT**
Measurements **6.99 X 4.64 X 2.81 MM**

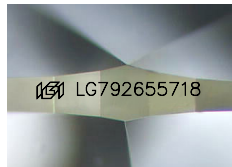
GRADING RESULTS

Carat Weight **0.56 CARAT**
Color Grade **D**
Clarity Grade **INTERNALLY FLAWLESS**

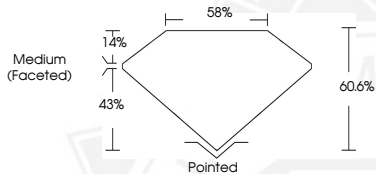
ADDITIONAL GRADING INFORMATION

Polish **EXCELLENT**
Symmetry **EXCELLENT**
Fluorescence **NONE**
Inscription(s) **IGI LG792655718**

Comments: As Grown - No indication of post-growth treatment. This Laboratory Grown Diamond was created by High Pressure High Temperature (HPHT) growth process. Type II



Sample Image Used



April 20, 2026

IGI Report Number **LG792655718**

**OVAL BRILLIANT
LABORATORY GROWN DIAMOND
6.99 X 4.64 X 2.81 MM**

Carat Weight **0.56 CARAT**
Color Grade **D**
Clarity Grade **I.F.**
Polish **EXCELLENT**
Symmetry **EXCELLENT**
Fluorescence **NONE**
Inscription(s) **IGI LG792655718**

Comments: As Grown - No indication of post-growth treatment. This Laboratory Grown Diamond was created by High Pressure High Temperature (HPHT) growth process. Type II



THIS DOCUMENT WAS PRODUCED WITH THE FOLLOWING SECURITY MEASURES: SPECIAL DOCUMENT PAPER, INK SCREENS, WATERMARK, BACKGROUND DESIGNS, HOLOGRAM AND OTHER SECURITY FEATURES NOT LISTED AND DO EXCEED DOCUMENT SECURITY INDUSTRY GUIDELINES.