



ELECTRONIC COPY

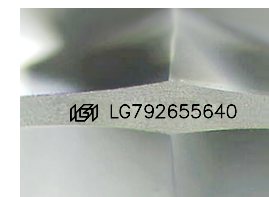
LG792655640
Report verification at igi.org



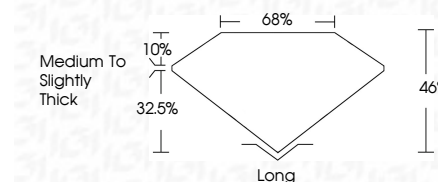
April 28, 2026
IGI Report Number **LG792655640**
Description **LABORATORY GROWN DIAMOND**
Shape and Cutting Style **SHIELD STEP CUT**
Measurements **11.11 X 6.04 X 2.78 MM**

GRADING RESULTS

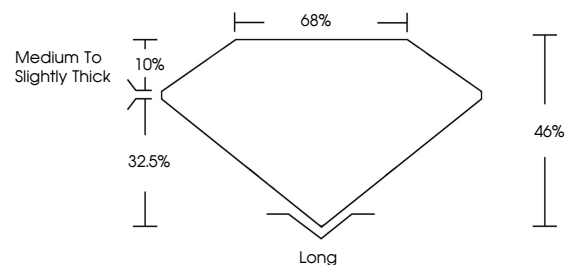
Carat Weight **1.47 CARAT**
Color Grade **E**
Clarity Grade **VVS 2**



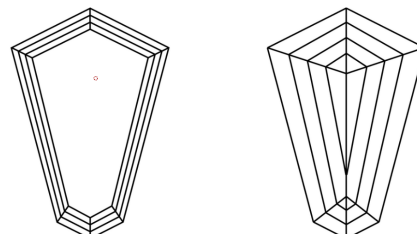
Sample Image Used



PROPORTIONS



CLARITY CHARACTERISTICS



KEY TO SYMBOLS

Red symbols indicate internal characteristics.
Green symbols indicate external characteristics.

COLOR

D E F G H I J Faint Very Light Light

CLARITY

FL	IF	VVS ¹⁻²	VS ¹⁻²	SI ¹⁻²	I ¹⁻³
Flawless	Internally Flawless	Very Very Slightly Included	Very Slightly Included	Slightly Included	Included

ADDITIONAL GRADING INFORMATION

Polish **EXCELLENT**
Symmetry **VERY GOOD**
Fluorescence **NONE**
Inscription(s) **IGI LG792655640**
Comments: This Laboratory Grown Diamond was created by Chemical Vapor Deposition (CVD) growth process.
Type IIa



IGI



April 28, 2026
IGI Report No LG792655640
SHIELD STEP CUT
11.11 X 6.04 X 2.78 MM
Carat Weight **1.47 CARAT**
Color Grade **E**
Clarity Grade **VVS 2**
Depth **46%**
Table **68%**
Girdle **Medium to Slightly Thick**
Culet **Long**
Polish **EXCELLENT**
Symmetry **VERY GOOD**
Fluorescence **NONE**
Inscription(s) **IGI LG792655640**
Comments: This Laboratory Grown Diamond was created by Chemical Vapor Deposition (CVD) growth process.
Type IIa