



**ELECTRONIC COPY**

LG792655345  
Report verification at igi.org



April 21, 2026

IGI Report Number **LG792655345**

Description **LABORATORY GROWN DIAMOND**

Shape and Cutting Style **ROUND BRILLIANT**

Measurements **10.82 - 10.89 X 6.71 MM**

**GRADING RESULTS**

Carat Weight **5.01 CARATS**

Color Grade **FANCY PINK**

Clarity Grade **VS 1**

Cut Grade **EXCELLENT**

**LABORATORY GROWN DIAMOND REPORT**

April 21, 2026

IGI Report Number **LG792655345**

Description **LABORATORY GROWN DIAMOND**

Shape and Cutting Style **ROUND BRILLIANT**

Measurements **10.82 - 10.89 X 6.71 MM**

**GRADING RESULTS**

Carat Weight **5.01 CARATS**

Color Grade **FANCY PINK**

Clarity Grade **VS 1**

Cut Grade **EXCELLENT**

**ADDITIONAL GRADING INFORMATION**

Polish **EXCELLENT**

Symmetry **EXCELLENT**

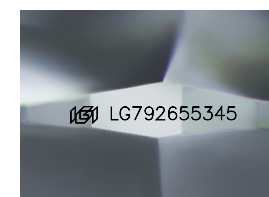
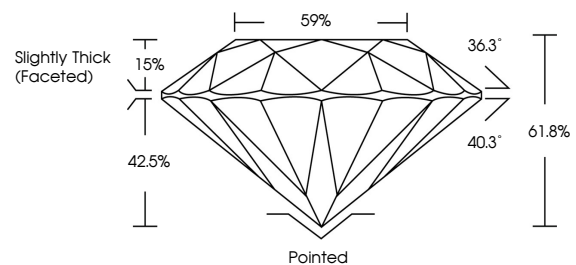
Fluorescence **SLIGHT**

Inscription(s) **IGI LG792655345**

Comments: This Laboratory Grown Diamond was created by Chemical Vapor Deposition (CVD) growth process.

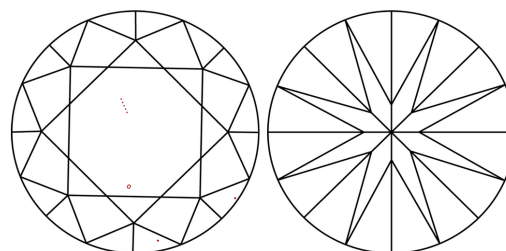
Indications of post-growth treatment.

**PROPORTIONS**



Sample Image Used

**CLARITY CHARACTERISTICS**



**KEY TO SYMBOLS**

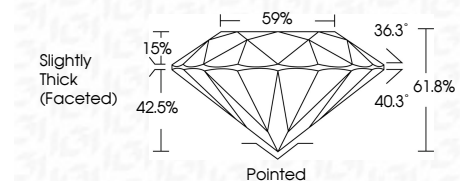
Red symbols indicate internal characteristics.  
Green symbols indicate external characteristics.

**COLOR**

D E F G H I J Faint Very Light Light

**CLARITY**

FL	IF	VS <sup>1-2</sup>	VS <sup>1-2</sup>	SI <sup>1-2</sup>	I <sup>1-3</sup>
Flawless	Internally Flawless	Very Very Slightly Included	Very Slightly Included	Slightly Included	Included



**ADDITIONAL GRADING INFORMATION**

Polish **EXCELLENT**

Symmetry **EXCELLENT**

Fluorescence **SLIGHT**

Inscription(s) **IGI LG792655345**

Comments: This Laboratory Grown Diamond was created by Chemical Vapor Deposition (CVD) growth process. Indications of post-growth treatment.



**IGI**



April 21, 2026  
IGI Report No LG792655345  
ROUND BRILLIANT

5.01 CARATS  
FANCY PINK

VS 1  
EXCELLENT

61.8%  
Slightly Thick (Faceted)

Pointed  
EXCELLENT

Symmetry  
EXCELLENT

Fluorescence  
SLIGHT

Inscription(s)  
IGI LG792655345

Comments: This Laboratory Grown Diamond was created by Chemical Vapor Deposition (CVD) growth process. Indications of post-growth treatment.