



ELECTRONIC COPY

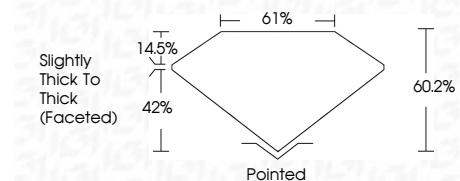
LG792655341
Report verification at igi.org



April 22, 2026
IGI Report Number **LG792655341**
Description **LABORATORY GROWN DIAMOND**

Shape and Cutting Style **ROUND MODIFIED BRILLIANT**
Measurements **9.00 - 8.98 X 5.41 MM**

GRADING RESULTS
Carat Weight **3.05 CARATS**
Color Grade **FANCY VIVID GREEN**
Clarity Grade **VVS 2**



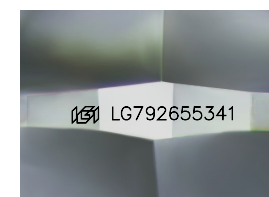
ADDITIONAL GRADING INFORMATION
Polish **EXCELLENT**
Symmetry **EXCELLENT**
Fluorescence **NONE**
Inscription(s) **(IGI) LG792655341**

Comments: This Laboratory Grown Diamond was created by Chemical Vapor Deposition (CVD) growth process. Indications of post-growth treatment.



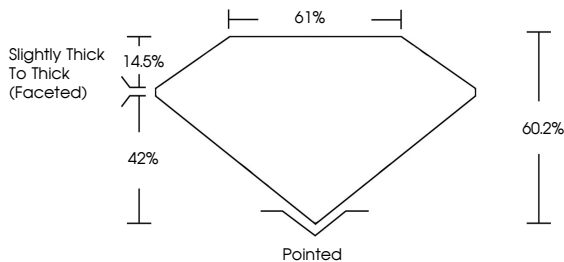
April 22, 2026
IGI Report No LG792655341
ROUND MODIFIED BRILLIANT
9.00 - 8.98 X 5.41 MM
3.05 CARATS
FANCY VIVID GREEN
VVS 2
60.2%
61%
Slightly Thick To Thick (Faceted)
Pointed
EXCELLENT
EXCELLENT
NONE
(IGI) LG792655341

Comments: This Laboratory Grown Diamond was created by Chemical Vapor Deposition (CVD) growth process. Indications of post-growth treatment.

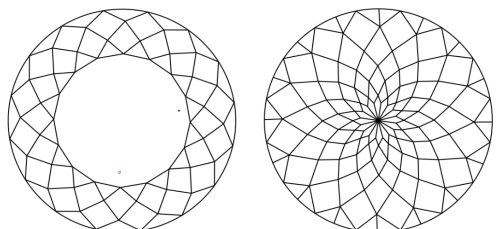


Sample Image Used

PROPORTIONS



CLARITY CHARACTERISTICS



KEY TO SYMBOLS

Red symbols indicate internal characteristics.
Green symbols indicate external characteristics.

COLOR

D	E	F	G	H	I	J	Faint	Very Light	Light
---	---	---	---	---	---	---	-------	------------	-------

CLARITY

FL	IF	VVS ¹⁻²	VS ¹⁻²	SI ¹⁻²	I ¹⁻³
Flawless	Internally Flawless	Very Very Slightly Included	Very Slightly Included	Slightly Included	Included

