



**INTERNATIONAL  
GEMOLOGICAL  
INSTITUTE**

**ELECTRONIC COPY**

**LABORATORY GROWN DIAMOND REPORT**

April 23, 2026  
 IGI Report Number **LG792654677**  
 Description **LABORATORY GROWN DIAMOND**  
 Shape and Cutting Style **HEART MODIFIED BRILLIANT**  
 Measurements **5.36 X 6.59 X 3.60 MM**

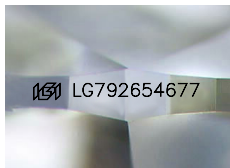
**GRADING RESULTS**

Carat Weight **0.99 CARAT**  
 Color Grade **FANCY INTENSE BLUE**  
 Clarity Grade **VVS 2**

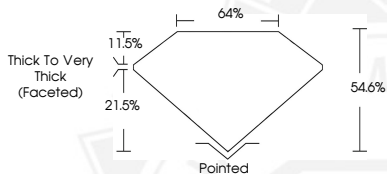
**ADDITIONAL GRADING INFORMATION**

Polish **VERY GOOD**  
 Symmetry **VERY GOOD**  
 Fluorescence **NONE**  
 Inscription(s) **IGI LG792654677**

Comments: As Grown - No indication of post-growth treatment. This Laboratory Grown Diamond was created by High Pressure High Temperature (HPHT) growth process.



Sample Image Used



April 23, 2026  
 IGI Report Number **LG792654677**  
 HEART MODIFIED BRILLIANT  
 LABORATORY GROWN DIAMOND  
 5.36 X 6.59 X 3.60 MM  
 Carat Weight **0.99 CARAT**  
 Color Grade **FANCY INTENSE BLUE**  
 Clarity Grade **VVS 2**  
 Polish **VERY GOOD**  
 Symmetry **VERY GOOD**  
 Fluorescence **NONE**  
 Inscription(s) **IGI LG792654677**

Comments: As Grown - No indication of post-growth treatment. This Laboratory Grown Diamond was created by High Pressure High Temperature (HPHT) growth process.



April 23, 2026  
 IGI Report Number **LG792654677**  
 HEART MODIFIED BRILLIANT  
 LABORATORY GROWN DIAMOND  
 5.36 X 6.59 X 3.60 MM  
 Carat Weight **0.99 CARAT**  
 Color Grade **FANCY INTENSE BLUE**  
 Clarity Grade **VVS 2**  
 Polish **VERY GOOD**  
 Symmetry **VERY GOOD**  
 Fluorescence **NONE**  
 Inscription(s) **IGI LG792654677**

Comments: As Grown - No indication of post-growth treatment. This Laboratory Grown Diamond was created by High Pressure High Temperature (HPHT) growth process.



THIS DOCUMENT WAS PRODUCED WITH THE FOLLOWING SECURITY MEASURES: SPECIAL DOCUMENT PAPER, INK SCREENS, WATERMARK, BACKGROUND DESIGNS, HOLOGRAM AND OTHER SECURITY FEATURES NOT LISTED AND DO EXCEED DOCUMENT SECURITY INDUSTRY GUIDELINES.

For terms & conditions and to verify this report, please visit [www.igi.org](http://www.igi.org)