



ELECTRONIC COPY

LG792654657
Report verification at igi.org



April 22, 2026
IGI Report Number **LG792654657**
Description **LABORATORY GROWN DIAMOND**
Shape and Cutting Style **ROUND BRILLIANT**
Measurements **6.53 - 6.58 X 3.95 MM**
GRADING RESULTS
Carat Weight **1.06 CARAT**
Color Grade **FANCY BROWN**
Clarity Grade **VS 2**
Cut Grade **VERY GOOD**

April 22, 2026
IGI Report Number **LG792654657**
Description **LABORATORY GROWN DIAMOND**
Shape and Cutting Style **ROUND BRILLIANT**
Measurements **6.53 - 6.58 X 3.95 MM**

GRADING RESULTS

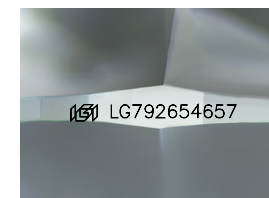
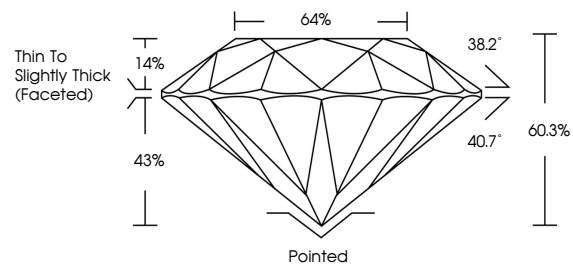
Carat Weight **1.06 CARAT**
Color Grade **FANCY BROWN**
Clarity Grade **VS 2**
Cut Grade **VERY GOOD**

ADDITIONAL GRADING INFORMATION

Polish **EXCELLENT**
Symmetry **VERY GOOD**
Fluorescence **NONE**
Inscription(s) **IGI LG792654657**

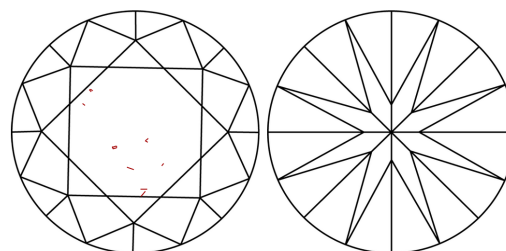
Comments: This Laboratory Grown Diamond was created by Chemical Vapor Deposition (CVD) growth process.

PROPORTIONS



Sample Image Used

CLARITY CHARACTERISTICS



KEY TO SYMBOLS

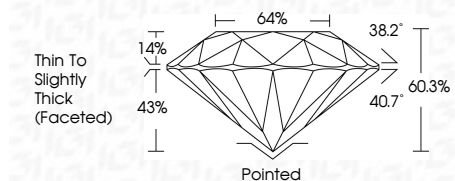
Red symbols indicate internal characteristics.
Green symbols indicate external characteristics.

COLOR

D E F G H I J Faint Very Light Light

CLARITY

FL	IF	VS ¹⁻²	VS ¹⁻²	SI ¹⁻²	I ¹⁻³
Flawless	Internally Flawless	Very Very Slightly Included	Very Slightly Included	Slightly Included	Included



ADDITIONAL GRADING INFORMATION

Polish **EXCELLENT**
Symmetry **VERY GOOD**
Fluorescence **NONE**
Inscription(s) **IGI LG792654657**
Comments: This Laboratory Grown Diamond was created by Chemical Vapor Deposition (CVD) growth process.



IGI



April 22, 2026
IGI Report No. **LG792654657**
ROUND BRILLIANT
6.53 - 6.58 X 3.95 MM
1.06 CARAT
FANCY BROWN
VS 2
VERY GOOD
60.3%
64%
Thin To Slightly Thick (Faceted)
Pointed
EXCELLENT
VERY GOOD
NONE
IGI LG792654657
Comments: This Laboratory Grown Diamond was created by Chemical Vapor Deposition (CVD) growth process.