



ELECTRONIC COPY

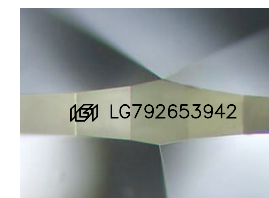
LG792653942
Report verification at igi.org



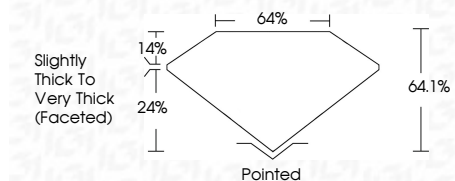
April 22, 2026
IGI Report Number **LG792653942**
Description **LABORATORY GROWN DIAMOND**

Shape and Cutting Style **HEART MODIFIED BRILLIANT**
Measurements **8.66 X 8.14 X 5.22 MM**

GRADING RESULTS
Carat Weight **2.70 CARATS**
Color Grade **FANCY INTENSE YELLOW**
Clarity Grade **VS 2**



Sample Image Used



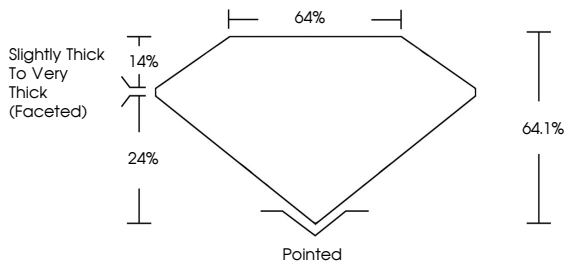
ADDITIONAL GRADING INFORMATION
Polish **EXCELLENT**
Symmetry **VERY GOOD**
Fluorescence **NONE**
Inscription(s) **IGI LG792653942**
Comments: This Laboratory Grown Diamond was created by Chemical Vapor Deposition (CVD) growth process.



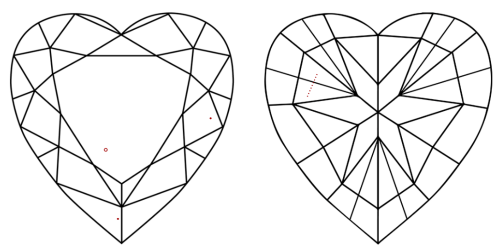
April 22, 2026
IGI Report No LG792653942
HEART MODIFIED BRILLIANT
8.66 X 8.14 X 5.22 MM
2.70 CARATS
FANCY INTENSE YELLOW
VS 2
64.1%
64%
Slightly Thick To Very Thick (Faceted)
Pointed
EXCELLENT
VERY GOOD
NONE
IGI LG792653942
Comments: This Laboratory Grown Diamond was created by Chemical Vapor Deposition (CVD) growth process.

April 22, 2026
IGI Report Number **LG792653942**
Description **LABORATORY GROWN DIAMOND**
Shape and Cutting Style **HEART MODIFIED BRILLIANT**
Measurements **8.66 X 8.14 X 5.22 MM**
GRADING RESULTS
Carat Weight **2.70 CARATS**
Color Grade **FANCY INTENSE YELLOW**
Clarity Grade **VS 2**
ADDITIONAL GRADING INFORMATION
Polish **EXCELLENT**
Symmetry **VERY GOOD**
Fluorescence **NONE**
Inscription(s) **IGI LG792653942**
Comments: This Laboratory Grown Diamond was created by Chemical Vapor Deposition (CVD) growth process.

PROPORTIONS



CLARITY CHARACTERISTICS



KEY TO SYMBOLS
Red symbols indicate internal characteristics.
Green symbols indicate external characteristics.

COLOR

D	E	F	G	H	I	J	Faint	Very Light	Light
---	---	---	---	---	---	---	-------	------------	-------

CLARITY

FL	IF	VS ¹⁻²	VS ¹⁻²	SI ¹⁻²	I ¹⁻³
Flawless	Internally Flawless	Very Very Slightly Included	Very Slightly Included	Slightly Included	Included

