



ELECTRONIC COPY

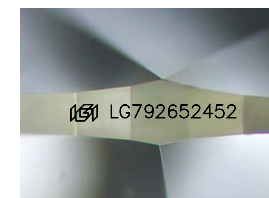
LG792652452
Report verification at igi.org



April 24, 2026
IGI Report Number **LG792652452**
Description **LABORATORY GROWN DIAMOND**

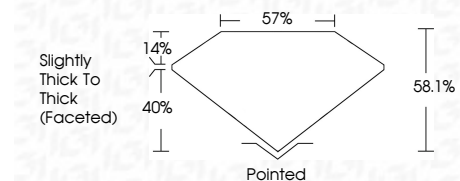
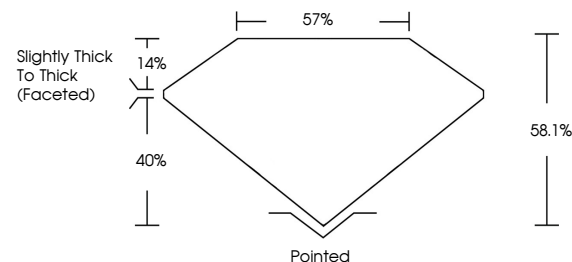
Shape and Cutting Style **HEART BRILLIANT**
Measurements **16.89 X 19.56 X 11.36 MM**

GRADING RESULTS
Carat Weight **21.53 CARATS**
Color Grade **F**
Clarity Grade **VS 1**

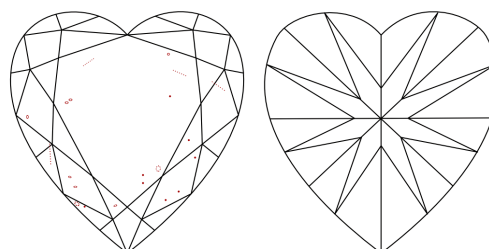


Sample Image Used

PROPORTIONS



CLARITY CHARACTERISTICS



KEY TO SYMBOLS

Red symbols indicate internal characteristics.
Green symbols indicate external characteristics.

COLOR

D E F G H I J Faint Very Light Light

CLARITY

FL	IF	VS ¹⁻²	VS ¹⁻²	SI ¹⁻²	I ¹⁻³
Flawless	Internally Flawless	Very Very Slightly Included	Very Slightly Included	Slightly Included	Included

ADDITIONAL GRADING INFORMATION

Polish **EXCELLENT**
Symmetry **EXCELLENT**
Fluorescence **NONE**
Inscription(s) **(IGI) LG792652452**
Comments: This Laboratory Grown Diamond was created by Chemical Vapor Deposition (CVD) growth process. Type IIa



IGI



April 24, 2026
IGI Report No LG792652452
HEART BRILLIANT
16.89 X 19.56 X 11.36 MM
21.53 CARATS
F
VS 1
58.1%
40%
Slightly Thick To Thick (Faceted)
Pointed
EXCELLENT
EXCELLENT
NONE
(IGI) LG792652452
Comments: This Laboratory Grown Diamond was created by Chemical Vapor Deposition (CVD) growth process. Type IIa