



**ELECTRONIC COPY**

LG792652442  
Report verification at igi.org



April 27, 2026

IGI Report Number **LG792652442**

Description **LABORATORY GROWN DIAMOND**

Shape and Cutting Style **ROUND BRILLIANT**

Measurements **8.77 - 8.80 X 5.23 MM**

**GRADING RESULTS**

Carat Weight **2.51 CARATS**

Color Grade **F**

Clarity Grade **VS 1**

Cut Grade **EXCELLENT**

April 27, 2026  
IGI Report Number **LG792652442**  
Description **LABORATORY GROWN DIAMOND**  
Shape and Cutting Style **ROUND BRILLIANT**  
Measurements **8.77 - 8.80 X 5.23 MM**

**GRADING RESULTS**

Carat Weight **2.51 CARATS**

Color Grade **F**

Clarity Grade **VS 1**

Cut Grade **EXCELLENT**

**ADDITIONAL GRADING INFORMATION**

Polish **EXCELLENT**

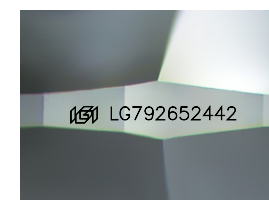
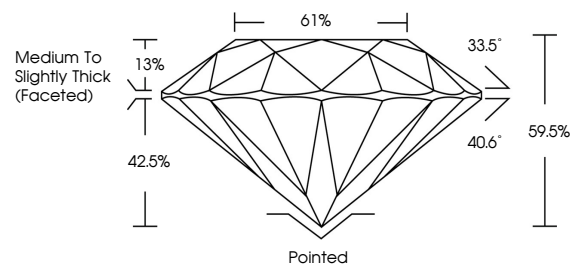
Symmetry **EXCELLENT**

Fluorescence **NONE**

Inscription(s) **IGI LG792652442**

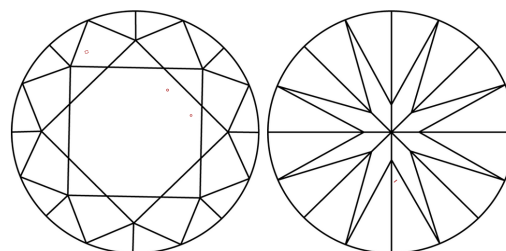
Comments: This Laboratory Grown Diamond was created by Chemical Vapor Deposition (CVD) growth process.  
Type IIa

**PROPORTIONS**



Sample Image Used

**CLARITY CHARACTERISTICS**



**KEY TO SYMBOLS**

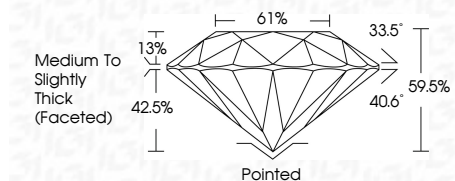
Red symbols indicate internal characteristics.  
Green symbols indicate external characteristics.

**COLOR**

D E F G H I J Faint Very Light Light

**CLARITY**

FL	IF	VS <sup>1-2</sup>	VS <sup>1-2</sup>	SI <sup>1-2</sup>	I <sup>1-3</sup>
Flawless	Internally Flawless	Very Very Slightly Included	Very Slightly Included	Slightly Included	Included



**ADDITIONAL GRADING INFORMATION**

Polish **EXCELLENT**

Symmetry **EXCELLENT**

Fluorescence **NONE**

Inscription(s) **IGI LG792652442**

Comments: This Laboratory Grown Diamond was created by Chemical Vapor Deposition (CVD) growth process.  
Type IIa



**IGI**



April 27, 2026  
IGI Report No LG792652442  
**ROUND BRILLIANT**  
8.77 - 8.80 X 5.23 MM  
Carat Weight **2.51 CARATS**  
Color Grade **F**  
Clarity Grade **VS 1**  
Cut Grade **EXCELLENT**  
Depth **59.5%**  
Table **61%**  
Girdle **Medium To Slightly Thick (Faceted)**  
Culet **Pointed**  
Polish **EXCELLENT**  
Symmetry **EXCELLENT**  
Fluorescence **NONE**  
Inscription(s) **IGI LG792652442**  
Comments: This Laboratory Grown Diamond was created by Chemical Vapor Deposition (CVD) growth process.  
Type IIa