



ELECTRONIC COPY

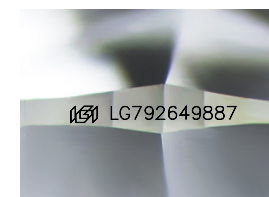
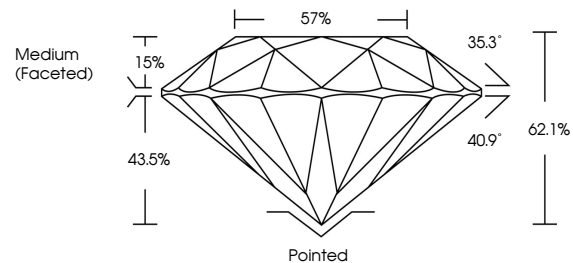
LG792649887
Report verification at igi.org



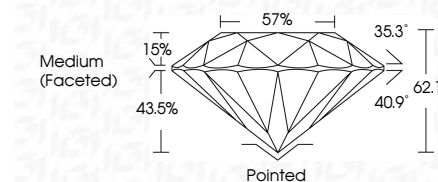
April 25, 2026
IGI Report Number **LG792649887**
Description **LABORATORY GROWN DIAMOND**
Shape and Cutting Style **ROUND BRILLIANT**
Measurements **11.61 - 11.65 X 7.22 MM**
GRADING RESULTS
Carat Weight **6.04 CARATS**
Color Grade **E**
Clarity Grade **VS 1**
Cut Grade **IDEAL**

April 25, 2026
IGI Report Number **LG792649887**
Description **LABORATORY GROWN DIAMOND**
Shape and Cutting Style **ROUND BRILLIANT**
Measurements **11.61 - 11.65 X 7.22 MM**
GRADING RESULTS
Carat Weight **6.04 CARATS**
Color Grade **E**
Clarity Grade **VS 1**
Cut Grade **IDEAL**

PROPORTIONS



Sample Image Used



ADDITIONAL GRADING INFORMATION
Polish **EXCELLENT**
Symmetry **EXCELLENT**
Fluorescence **NONE**
Inscription(s) **IGI LG792649887**

Comments: This Laboratory Grown Diamond was created by Chemical Vapor Deposition (CVD) growth process. Type IIa

COLOR

D E F G H I J Faint Very Light Light

CLARITY

FL	IF	VS ¹⁻²	VS ¹⁻²	SI ¹⁻²	I ¹⁻³
Flawless	Internally Flawless	Very Very Slightly Included	Very Slightly Included	Slightly Included	Included

ADDITIONAL GRADING INFORMATION

Polish **EXCELLENT**
Symmetry **EXCELLENT**
Fluorescence **NONE**
Inscription(s) **IGI LG792649887**
Comments: This Laboratory Grown Diamond was created by Chemical Vapor Deposition (CVD) growth process. Type IIa



IGI

April 25, 2026
IGI Report No LG792649887
ROUND BRILLIANT
11.61 - 11.65 X 7.22 MM
6.04 CARATS
E
VS 1
IDEAL
62.1%
57%
Medium (Faceted)
Pointed
EXCELLENT
EXCELLENT
NONE
IGI LG792649887
Comments: This Laboratory Grown Diamond was created by Chemical Vapor Deposition (CVD) growth process. Type IIa