



ELECTRONIC COPY

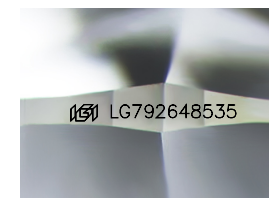
LG792648535
Report verification at igi.org



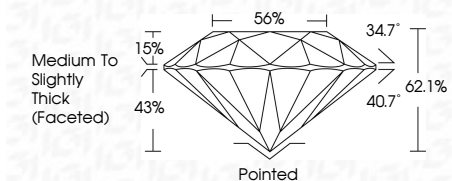
April 18, 2026
IGI Report Number LG792648535
Description LABORATORY GROWN DIAMOND
Shape and Cutting Style ROUND BRILLIANT
Measurements 8.05 - 8.10 X 5.02 MM

GRADING RESULTS

Carat Weight 2.02 CARATS
Color Grade FANCY LIGHT PINK
Clarity Grade VS 1
Cut Grade IDEAL



Sample Image Used



ADDITIONAL GRADING INFORMATION

Polish EXCELLENT
Symmetry EXCELLENT
Fluorescence SLIGHT
Inscription(s) IGI LG792648535
Comments: This Laboratory Grown Diamond was created by Chemical Vapor Deposition (CVD) growth process. Indications of post-growth treatment.



April 18, 2026
IGI Report No LG792648535
ROUND BRILLIANT
2.02 CARATS
FANCY LIGHT PINK
VS 1
IDEAL
86%
Medium To Slightly Thick (Faceted)
Pointed
EXCELLENT
EXCELLENT
SLIGHT
IGI LG792648535
Comments: This Laboratory Grown Diamond was created by Chemical Vapor Deposition (CVD) growth process. Indications of post-growth treatment.

April 18, 2026
IGI Report Number LG792648535
Description LABORATORY GROWN DIAMOND
Shape and Cutting Style ROUND BRILLIANT
Measurements 8.05 - 8.10 X 5.02 MM

GRADING RESULTS

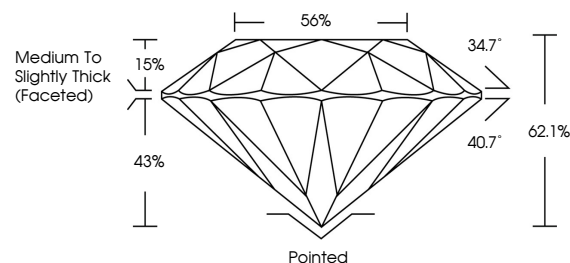
Carat Weight 2.02 CARATS
Color Grade FANCY LIGHT PINK
Clarity Grade VS 1
Cut Grade IDEAL

ADDITIONAL GRADING INFORMATION

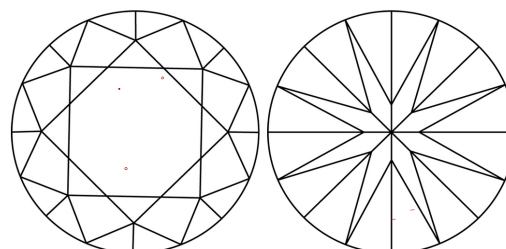
Polish EXCELLENT
Symmetry EXCELLENT
Fluorescence SLIGHT
Inscription(s) IGI LG792648535

Comments: This Laboratory Grown Diamond was created by Chemical Vapor Deposition (CVD) growth process. Indications of post-growth treatment.

PROPORTIONS



CLARITY CHARACTERISTICS



KEY TO SYMBOLS

Red symbols indicate internal characteristics.
Green symbols indicate external characteristics.

COLOR

D E F G H I J Faint Very Light Light

CLARITY

FL IF VS 1-2 VS 2-3 SI 1-2 I 1-3
Flawless Internally Flawless Very Very Slightly Included Very Slightly Included Slightly Included Included

