



ELECTRONIC COPY

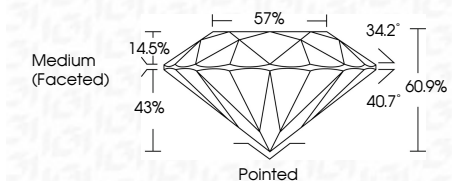
LG792648483
Report verification at igi.org



April 18, 2026
IGI Report Number **LG792648483**
Description **LABORATORY GROWN DIAMOND**
Shape and Cutting Style **ROUND BRILLIANT**
Measurements **6.47 - 6.50 X 3.95 MM**

GRADING RESULTS

Carat Weight **1.01 CARAT**
Color Grade **LIGHT PINK**
Clarity Grade **VS 1**
Cut Grade **IDEAL**

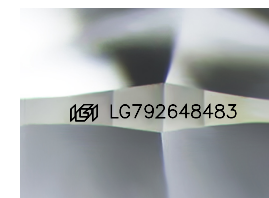


ADDITIONAL GRADING INFORMATION

Polish **EXCELLENT**
Symmetry **EXCELLENT**
Fluorescence **SLIGHT**
Inscription(s) **IGI LG792648483**
Comments: This Laboratory Grown Diamond was created by Chemical Vapor Deposition (CVD) growth process. Indications of post-growth treatment.

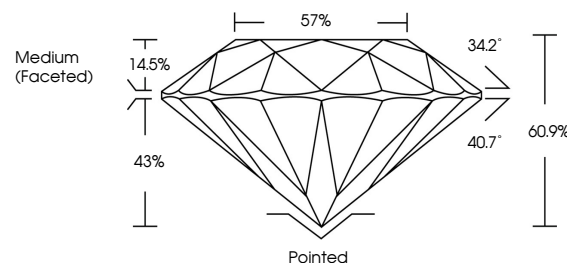


April 18, 2026
IGI Report No LG792648483
ROUND BRILLIANT
6.47 - 6.50 X 3.95 MM
1.01 CARAT
LIGHT PINK
Color Grade
VS 1
Clarity Grade
IDEAL
Cut Grade
60.9%
Depth
57%
Table
Medium (Faceted)
Grade
Pointed
Cutler
EXCELLENT
Polish
EXCELLENT
Symmetry
EXCELLENT
Fluorescence
SLIGHT
Inscription(s)
IGI LG792648483
Comments: This Laboratory Grown Diamond was created by Chemical Vapor Deposition (CVD) growth process. Indications of post-growth treatment.

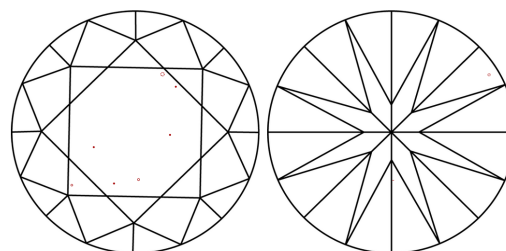


Sample Image Used

PROPORTIONS



CLARITY CHARACTERISTICS



KEY TO SYMBOLS

Red symbols indicate internal characteristics.
Green symbols indicate external characteristics.

COLOR

D E F G H I J Faint Very Light Light

CLARITY

FL	IF	VS ¹⁻²	VS ¹⁻²	SI ¹⁻²	I ¹⁻³
Flawless	Internally Flawless	Very Very Slightly Included	Very Slightly Included	Slightly Included	Included

