



ELECTRONIC COPY

LG792647666
Report verification at igi.org



April 22, 2026
IGI Report Number **LG792647666**
Description **LABORATORY GROWN DIAMOND**
Shape and Cutting Style **SQUARE CUSHION MODIFIED BRILLIANT**
Measurements **9.87 X 9.44 X 6.47 MM**
GRADING RESULTS
Carat Weight **5.58 CARATS**
Color Grade **FANCY INTENSE YELLOW**
Clarity Grade **VS 2**

LABORATORY GROWN DIAMOND REPORT

April 22, 2026
IGI Report Number **LG792647666**
Description **LABORATORY GROWN DIAMOND**
Shape and Cutting Style **SQUARE CUSHION MODIFIED BRILLIANT**
Measurements **9.87 X 9.44 X 6.47 MM**

GRADING RESULTS

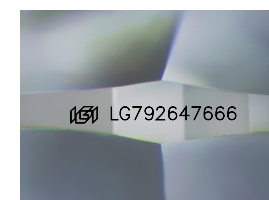
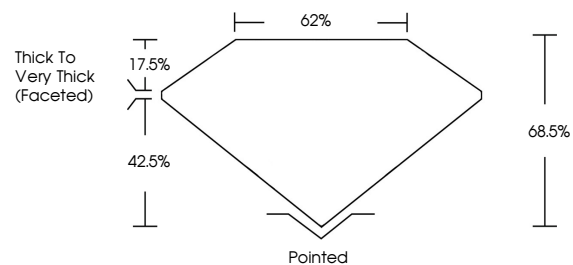
Carat Weight **5.58 CARATS**
Color Grade **FANCY INTENSE YELLOW**
Clarity Grade **VS 2**

ADDITIONAL GRADING INFORMATION

Polish **EXCELLENT**
Symmetry **EXCELLENT**
Fluorescence **NONE**
Inscription(s) **IGI LG792647666**

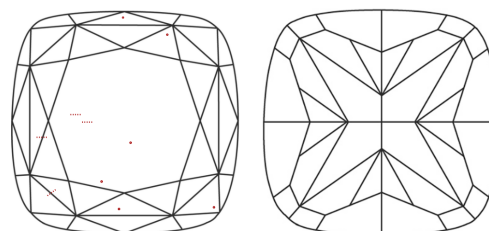
Comments: This Laboratory Grown Diamond was created by Chemical Vapor Deposition (CVD) growth process.

PROPORTIONS



Sample Image Used

CLARITY CHARACTERISTICS



KEY TO SYMBOLS

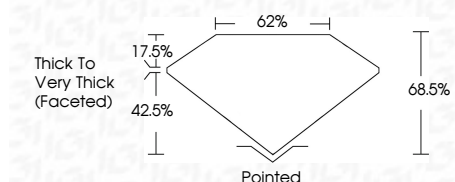
Red symbols indicate internal characteristics.
Green symbols indicate external characteristics.

COLOR

D E F G H I J Faint Very Light Light

CLARITY

FL	IF	VS ¹⁻²	VS ¹⁻²	SI ¹⁻²	I ¹⁻³
Flawless	Internally Flawless	Very Very Slightly Included	Very Slightly Included	Slightly Included	Included



ADDITIONAL GRADING INFORMATION

Polish **EXCELLENT**
Symmetry **EXCELLENT**
Fluorescence **NONE**
Inscription(s) **IGI LG792647666**
Comments: This Laboratory Grown Diamond was created by Chemical Vapor Deposition (CVD) growth process.



IGI



April 22, 2026
IGI Report No. **LG792647666**
SQUARE CUSHION MODIFIED BRILLIANT
5.58 CARATS
Carat Weight
FANCY INTENSE YELLOW
Color Grade
VS 2
Clarity Grade
68.5%
Depth
62%
Table
Girdle
Thick to Very Thick (Faceted)
Culet
Pointed
Polish
EXCELLENT
Symmetry
EXCELLENT
Fluorescence
NONE
Inscription(s)
IGI LG792647666

Comments: This Laboratory Grown Diamond was created by Chemical Vapor Deposition (CVD) growth process.