



**LABORATORY GROWN DIAMOND REPORT**

April 23, 2026  
 IGI Report Number **LG792647530**  
 Description **LABORATORY GROWN DIAMOND**  
 Shape and Cutting Style **HEART MODIFIED BRILLIANT**  
 Measurements **6.19 X 5.96 X 3.51 MM**

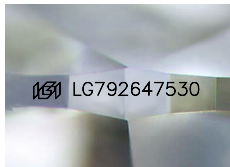
**GRADING RESULTS**

Carat Weight **0.99 CARAT**  
 Color Grade **FANCY INTENSE YELLOW**  
 Clarity Grade **VS 1**

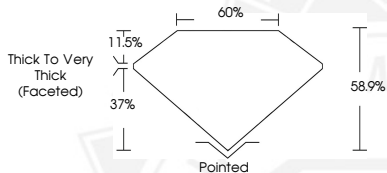
**ADDITIONAL GRADING INFORMATION**

Polish **EXCELLENT**  
 Symmetry **EXCELLENT**  
 Fluorescence **NONE**  
 Inscription(s) **IGI LG792647530**

Comments: This Laboratory Grown Diamond was created by Chemical Vapor Deposition (CVD) growth process.



Sample Image Used



April 23, 2026  
 IGI Report Number **LG792647530**  
 HEART MODIFIED BRILLIANT  
 LABORATORY GROWN DIAMOND  
**6.19 X 5.96 X 3.51 MM**  
 Carat Weight **0.99 CARAT**  
 Color Grade **FANCY INTENSE YELLOW**  
 Clarity Grade **VS 1**  
 Polish **EXCELLENT**  
 Symmetry **EXCELLENT**  
 Fluorescence **NONE**  
 Inscription(s) **IGI LG792647530**  
 Comments: This Laboratory Grown Diamond was created by Chemical Vapor Deposition (CVD) growth process.



April 23, 2026  
 IGI Report Number **LG792647530**  
 HEART MODIFIED BRILLIANT  
 LABORATORY GROWN DIAMOND  
**6.19 X 5.96 X 3.51 MM**  
 Carat Weight **0.99 CARAT**  
 Color Grade **FANCY INTENSE YELLOW**  
 Clarity Grade **VS 1**  
 Polish **EXCELLENT**  
 Symmetry **EXCELLENT**  
 Fluorescence **NONE**  
 Inscription(s) **IGI LG792647530**  
 Comments: This Laboratory Grown Diamond was created by Chemical Vapor Deposition (CVD) growth process.



THIS DOCUMENT WAS PRODUCED WITH THE FOLLOWING SECURITY MEASURES: SPECIAL DOCUMENT PAPER, INK SCREENS, WATERMARK, BACKGROUND DESIGNS, HOLOGRAM AND OTHER SECURITY FEATURES NOT LISTED AND DO EXCEED DOCUMENT SECURITY INDUSTRY GUIDELINES.