



ELECTRONIC COPY

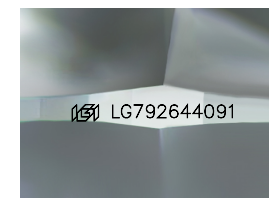
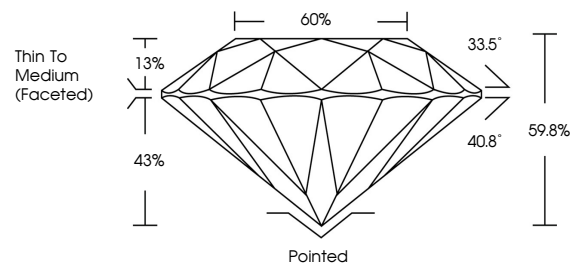
LG792644091
Report verification at igi.org



April 18, 2026
IGI Report Number **LG792644091**
Description **LABORATORY GROWN DIAMOND**
Shape and Cutting Style **ROUND BRILLIANT**
Measurements **7.39 - 7.48 X 4.44 MM**
GRADING RESULTS
Carat Weight **1.49 CARAT**
Color Grade **G**
Clarity Grade **VS 1**
Cut Grade **IDEAL**

April 18, 2026
IGI Report Number **LG792644091**
Description **LABORATORY GROWN DIAMOND**
Shape and Cutting Style **ROUND BRILLIANT**
Measurements **7.39 - 7.48 X 4.44 MM**

PROPORTIONS

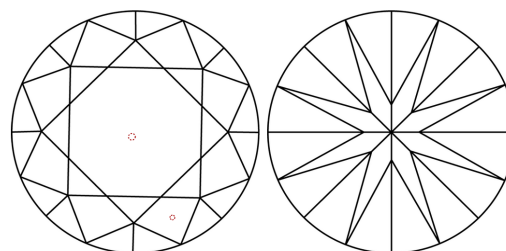


Sample Image Used

GRADING RESULTS

Carat Weight **1.49 CARAT**
Color Grade **G**
Clarity Grade **VS 1**
Cut Grade **IDEAL**

CLARITY CHARACTERISTICS



KEY TO SYMBOLS

Red symbols indicate internal characteristics.
Green symbols indicate external characteristics.

ADDITIONAL GRADING INFORMATION

Polish **EXCELLENT**
Symmetry **EXCELLENT**
Fluorescence **NONE**
Inscription(s) **IGI LG792644091**

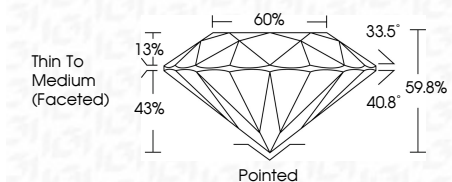
Comments: This Laboratory Grown Diamond was created by Chemical Vapor Deposition (CVD) growth process.
Type IIa

COLOR

D E F G H I J Faint Very Light Light

CLARITY

FL	IF	VS ¹⁻²	VS ¹⁻²	SI ¹⁻²	I ¹⁻³
Flawless	Internally Flawless	Very Very Slightly Included	Very Slightly Included	Slightly Included	Included



ADDITIONAL GRADING INFORMATION

Polish **EXCELLENT**
Symmetry **EXCELLENT**
Fluorescence **NONE**
Inscription(s) **IGI LG792644091**
Comments: This Laboratory Grown Diamond was created by Chemical Vapor Deposition (CVD) growth process.
Type IIa



IGI



April 18, 2026
IGI Report No LG792644091
ROUND BRILLIANT
Carat Weight **1.49 CARAT**
Color Grade **G**
Clarity Grade **VS 1**
Depth **IDEAL**
Table **59.8%**
Girdle **60%**
Thin To Medium (Faceted)
Culet **Pointed**
Polish **EXCELLENT**
Symmetry **EXCELLENT**
Fluorescence **NONE**
Inscriptions(s) **IGI LG792644091**
Comments: This Laboratory Grown Diamond was created by Chemical Vapor Deposition (CVD) growth process.
Type IIa