



ELECTRONIC COPY

LG792644000
Report verification at igi.org



April 24, 2026
IGI Report Number **LG792644000**
Description **LABORATORY GROWN DIAMOND**
Shape and Cutting Style **ROUND POLYGON MIXED CUT**
Measurements **8.28 - 8.26 X 5.16 MM**
GRADING RESULTS
Carat Weight **2.18 CARATS**
Color Grade **FANCY INTENSE PINK**
Clarity Grade **VS 1**

LABORATORY GROWN DIAMOND REPORT

April 24, 2026
IGI Report Number **LG792644000**
Description **LABORATORY GROWN DIAMOND**
Shape and Cutting Style **ROUND POLYGON MIXED CUT**
Measurements **8.28 - 8.26 X 5.16 MM**

GRADING RESULTS

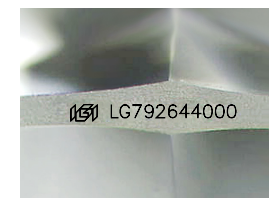
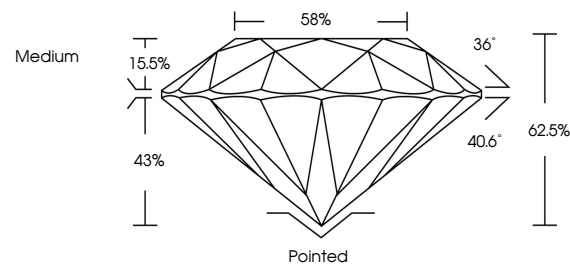
Carat Weight **2.18 CARATS**
Color Grade **FANCY INTENSE PINK**
Clarity Grade **VS 1**

ADDITIONAL GRADING INFORMATION

Polish **EXCELLENT**
Symmetry **EXCELLENT**
Fluorescence **SLIGHT**
Inscription(s) **IGI LG792644000**

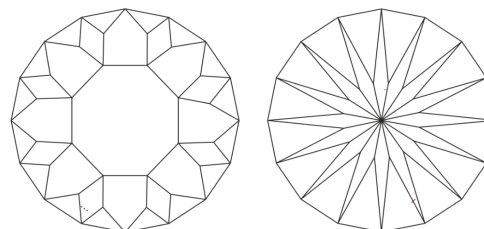
Comments: This Laboratory Grown Diamond was created by Chemical Vapor Deposition (CVD) growth process. Indications of post-growth treatment.

PROPORTIONS



Sample Image Used

CLARITY CHARACTERISTICS



KEY TO SYMBOLS

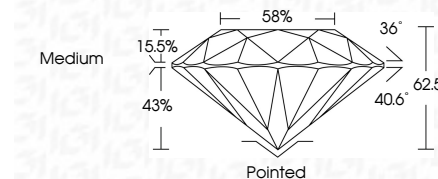
Red symbols indicate internal characteristics.
Green symbols indicate external characteristics.

COLOR

D E F G H I J Faint Very Light Light

CLARITY

FL	IF	VS ¹⁻²	VS ¹⁻²	SI ¹⁻²	I ¹⁻³
Flawless	Internally Flawless	Very Very Slightly Included	Very Slightly Included	Slightly Included	Included



ADDITIONAL GRADING INFORMATION

Polish **EXCELLENT**
Symmetry **EXCELLENT**
Fluorescence **SLIGHT**
Inscription(s) **IGI LG792644000**
Comments: This Laboratory Grown Diamond was created by Chemical Vapor Deposition (CVD) growth process. Indications of post-growth treatment.



IGI



April 24, 2026
IGI Report No LG792644000
ROUND POLYGON MIXED CUT
8.28 - 8.26 X 5.16 MM
Carat Weight **2.18 CARATS**
Color Grade **FANCY INTENSE PINK**
Clarity Grade **VS 1**
Table **15.5%**
Depth **43%**
Girdle **Medium**
Culet **Pointed**
Polish **EXCELLENT**
Symmetry **EXCELLENT**
Fluorescence **SLIGHT**
Inscription(s) **IGI LG792644000**
Comments: This Laboratory Grown Diamond was created by Chemical Vapor Deposition (CVD) growth process. Indications of post-growth treatment.