



**INTERNATIONAL  
GEMOLOGICAL  
INSTITUTE**

**LABORATORY GROWN DIAMOND REPORT**

April 24, 2026  
 IGI Report Number **LG792643948**  
 Description **LABORATORY GROWN DIAMOND**  
 Shape and Cutting Style **ROUND BRILLIANT**  
 Measurements **4.09 - 4.12 X 2.54 MM**

**GRADING RESULTS**

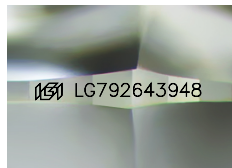
Carat Weight **0.27 CARAT**  
 Color Grade **FANCY INTENSE YELLOW**  
 Clarity Grade **VS 1**  
 Cut Grade **VERY GOOD**

**ADDITIONAL GRADING INFORMATION**

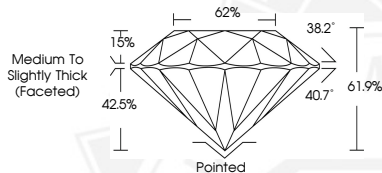
Polish **VERY GOOD**  
 Symmetry **VERY GOOD**  
 Fluorescence **VERY SLIGHT**  
 Inscription(s) **IGI LG792643948**

Comments: This Laboratory Grown Diamond was created by Chemical Vapor Deposition (CVD) growth process. Indications of post-growth treatment.

**ELECTRONIC COPY**



Sample Image Used



April 24, 2026  
 IGI Report Number **LG792643948**  
 ROUND BRILLIANT  
 LABORATORY GROWN DIAMOND  
 4.09 - 4.12 X 2.54 MM  
 Carat Weight **0.27 CARAT**  
 Color Grade **FANCY INTENSE YELLOW**  
 Clarity Grade **VS 1**  
 Cut Grade **VERY GOOD**  
 Polish **VERY GOOD**  
 Symmetry **VERY GOOD**  
 Fluorescence **VERY SLIGHT**  
 Inscription(s) **IGI LG792643948**

Comments: This Laboratory Grown Diamond was created by Chemical Vapor Deposition (CVD) growth process. Indications of post-growth treatment.



April 24, 2026  
 IGI Report Number **LG792643948**  
 ROUND BRILLIANT  
 LABORATORY GROWN DIAMOND  
 4.09 - 4.12 X 2.54 MM  
 Carat Weight **0.27 CARAT**  
 Color Grade **FANCY INTENSE YELLOW**  
 Clarity Grade **VS 1**  
 Cut Grade **VERY GOOD**  
 Polish **VERY GOOD**  
 Symmetry **VERY GOOD**  
 Fluorescence **VERY SLIGHT**  
 Inscription(s) **IGI LG792643948**

Comments: This Laboratory Grown Diamond was created by Chemical Vapor Deposition (CVD) growth process. Indications of post-growth treatment.



THIS DOCUMENT WAS PRODUCED WITH THE FOLLOWING SECURITY MEASURES: SPECIAL DOCUMENT PAPER, INK SCREENS, WATERMARK, BACKGROUND DESIGNS, HOLOGRAM AND OTHER SECURITY FEATURES NOT LISTED AND DO EXCEED DOCUMENT SECURITY INDUSTRY GUIDELINES.

For terms & conditions and to verify this report, please visit [www.igi.org](http://www.igi.org)