



**INTERNATIONAL  
GEMOLOGICAL  
INSTITUTE**

**ELECTRONIC COPY**



April 18, 2026

IGI Report Number **LG792643373**

**ROUND BRILLIANT**

**LABORATORY GROWN DIAMOND**

**5.80 - 5.83 X 3.51 MM**

Carat Weight	<b>0.72 CARAT</b>
Color Grade	<b>FANCY PINK</b>
Clarity Grade	<b>VS 1</b>
Cut Grade	<b>IDEAL</b>
Polish	<b>EXCELLENT</b>
Symmetry	<b>EXCELLENT</b>
Fluorescence	<b>SLIGHT</b>
Inscription(s)	<b>IGI LG792643373</b>

Comments: This Laboratory Grown Diamond was created by Chemical Vapor Deposition (CVD) growth process. Indications of post-growth treatment.

**LABORATORY GROWN DIAMOND REPORT**

April 18, 2026

IGI Report Number

**LG792643373**

Description

**LABORATORY GROWN DIAMOND**

Shape and Cutting Style

**ROUND BRILLIANT**

Measurements

**5.80 - 5.83 X 3.51 MM**

**GRADING RESULTS**

Carat Weight

**0.72 CARAT**

Color Grade

**FANCY PINK**

Clarity Grade

**VS 1**

Cut Grade

**IDEAL**

**ADDITIONAL GRADING INFORMATION**

Polish

**EXCELLENT**

Symmetry

**EXCELLENT**

Fluorescence

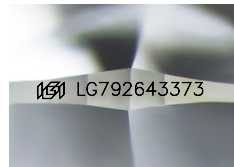
**SLIGHT**

Inscription(s)

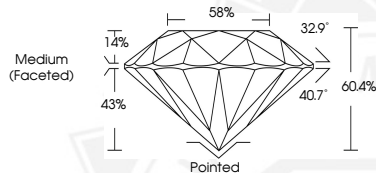
**IGI LG792643373**

Comments: This Laboratory Grown Diamond was created by Chemical Vapor Deposition (CVD) growth process.

Indications of post-growth treatment.



Sample Image Used



April 18, 2026

IGI Report Number **LG792643373**

**ROUND BRILLIANT**

**LABORATORY GROWN DIAMOND**

**5.80 - 5.83 X 3.51 MM**

Carat Weight	<b>0.72 CARAT</b>
Color Grade	<b>FANCY PINK</b>
Clarity Grade	<b>VS 1</b>
Cut Grade	<b>IDEAL</b>
Polish	<b>EXCELLENT</b>
Symmetry	<b>EXCELLENT</b>
Fluorescence	<b>SLIGHT</b>
Inscription(s)	<b>IGI LG792643373</b>

Comments: This Laboratory Grown Diamond was created by Chemical Vapor Deposition (CVD) growth process. Indications of post-growth treatment.



THIS DOCUMENT WAS PRODUCED WITH THE FOLLOWING SECURITY MEASURES: SPECIAL DOCUMENT PAPER, INK SCREENS, WATERMARK, BACKGROUND DESIGNS, HOLOGRAM AND OTHER SECURITY FEATURES NOT LISTED AND DO EXCEED DOCUMENT SECURITY INDUSTRY GUIDELINES.

For terms & conditions and to verify this report, please visit [www.igi.org](http://www.igi.org)