



**ELECTRONIC COPY**

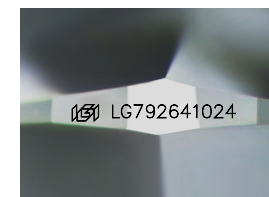
LG792641024  
Report verification at [igi.org](http://igi.org)



April 23, 2026  
IGI Report Number **LG792641024**  
Description **LABORATORY GROWN DIAMOND**

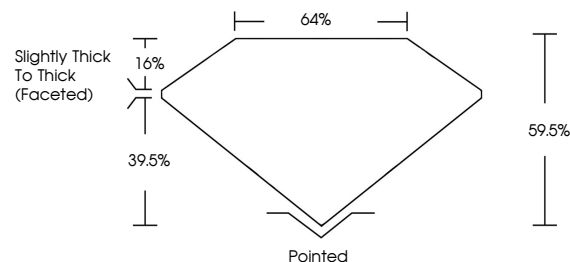
Shape and Cutting Style **ROUND MODIFIED BRILLIANT**  
Measurements **10.65 - 10.63 X 6.32 MM**

**GRADING RESULTS**  
Carat Weight **5.02 CARATS**  
Color Grade **FANCY INTENSE BLUE**  
Clarity Grade **VVS 2**

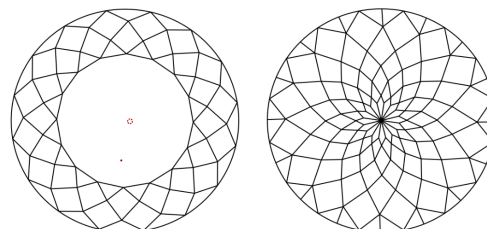


Sample Image Used

**PROPORTIONS**



**CLARITY CHARACTERISTICS**



**KEY TO SYMBOLS**

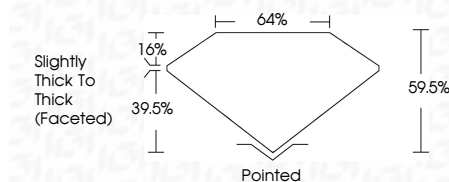
Red symbols indicate internal characteristics.  
Green symbols indicate external characteristics.

**COLOR**

D E F G H I J Faint Very Light Light

**CLARITY**

FL	IF	VVS <sup>1-2</sup>	VS <sup>1-2</sup>	SI <sup>1-2</sup>	I <sup>1-3</sup>
Flawless	Internally Flawless	Very Very Slightly Included	Very Slightly Included	Slightly Included	Included



**ADDITIONAL GRADING INFORMATION**

Polish **EXCELLENT**  
Symmetry **EXCELLENT**  
Fluorescence **NONE**  
Inscription(s) **IGI LG792641024**

Comments: This Laboratory Grown Diamond was created by Chemical Vapor Deposition (CVD) growth process. Indications of post-growth treatment.



April 23, 2026  
IGI Report No LG792641024  
**ROUND MODIFIED BRILLIANT**  
5.02 CARATS  
FANCY INTENSE BLUE  
VVS 2  
64%  
Slightly Thick To Thick (Faceted)  
Pointed  
EXCELLENT  
EXCELLENT  
NONE  
IGI LG792641024

Comments: This Laboratory Grown Diamond was created by Chemical Vapor Deposition (CVD) growth process. Indications of post-growth treatment.