



ELECTRONIC COPY

LG792640915
Report verification at igi.org



April 20, 2026

IGI Report Number **LG792640915**

Description **LABORATORY GROWN DIAMOND**

Shape and Cutting Style **PRINCESS CUT**

Measurements **7.83 X 7.82 X 5.61 MM**

GRADING RESULTS

Carat Weight **2.86 CARATS**

Color Grade **F**

Clarity Grade **VVS 2**

April 20, 2026

IGI Report Number **LG792640915**

Description **LABORATORY GROWN DIAMOND**

Shape and Cutting Style **PRINCESS CUT**

Measurements **7.83 X 7.82 X 5.61 MM**

GRADING RESULTS

Carat Weight **2.86 CARATS**

Color Grade **F**

Clarity Grade **VVS 2**

ADDITIONAL GRADING INFORMATION

Polish **EXCELLENT**

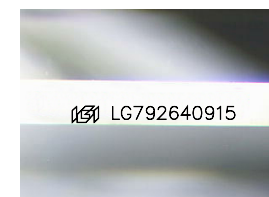
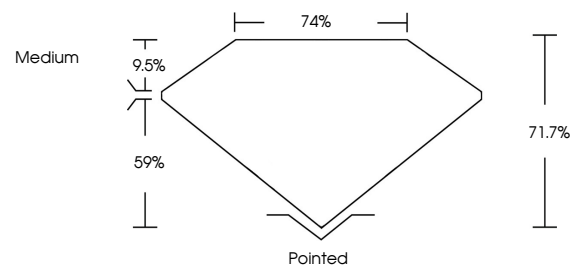
Symmetry **EXCELLENT**

Fluorescence **NONE**

Inscription(s) **IGI LG792640915**

Comments: This Laboratory Grown Diamond was created by Chemical Vapor Deposition (CVD) growth process.
Type IIa

PROPORTIONS



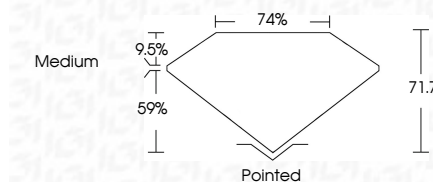
Sample Image Used

COLOR

D E F G H I J Faint Very Light Light

CLARITY

FL	IF	VS ¹⁻²	VS ¹⁻²	SI ¹⁻²	I ¹⁻³
Flawless	Internally Flawless	Very Very Slightly Included	Very Slightly Included	Slightly Included	Included



ADDITIONAL GRADING INFORMATION

Polish **EXCELLENT**

Symmetry **EXCELLENT**

Fluorescence **NONE**

Inscription(s) **IGI LG792640915**

Comments: This Laboratory Grown Diamond was created by Chemical Vapor Deposition (CVD) growth process.
Type IIa



IGI



April 20, 2026
IGI Report No. LG792640915
PRINCESS CUT

7.83 X 7.82 X 5.61 MM
2.86 CARATS
F
VVS 2
71.7%
74%
Medium
Pointed
EXCELLENT
EXCELLENT
NONE
IGI LG792640915

Comments: This Laboratory Grown Diamond was created by Chemical Vapor Deposition (CVD) growth process.
Type IIa