



ELECTRONIC COPY

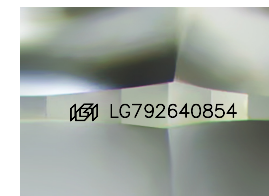
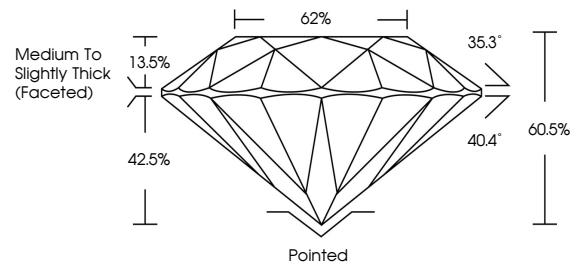
LG792640854
Report verification at igi.org



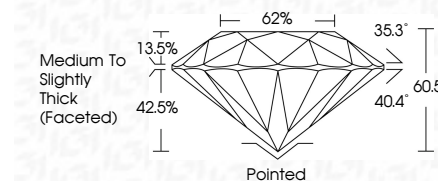
April 24, 2026
IGI Report Number **LG792640854**
Description **LABORATORY GROWN DIAMOND**
Shape and Cutting Style **ROUND BRILLIANT**
Measurements **8.29 - 8.32 X 5.03 MM**
GRADING RESULTS
Carat Weight **2.20 CARATS**
Color Grade **F**
Clarity Grade **VS 1**
Cut Grade **EXCELLENT**

April 24, 2026
IGI Report Number **LG792640854**
Description **LABORATORY GROWN DIAMOND**
Shape and Cutting Style **ROUND BRILLIANT**
Measurements **8.29 - 8.32 X 5.03 MM**
GRADING RESULTS
Carat Weight **2.20 CARATS**
Color Grade **F**
Clarity Grade **VS 1**
Cut Grade **EXCELLENT**

PROPORTIONS



Sample Image Used



ADDITIONAL GRADING INFORMATION
Polish **EXCELLENT**
Symmetry **EXCELLENT**
Fluorescence **NONE**
Inscription(s) **IGI LG792640854**

Comments: This Laboratory Grown Diamond was created by Chemical Vapor Deposition (CVD) growth process. Type IIa

COLOR

D E F G H I J Faint Very Light Light

CLARITY

FL	IF	VS ¹⁻²	VS ¹⁻²	SI ¹⁻²	I ¹⁻³
Flawless	Internally Flawless	Very Very Slightly Included	Very Slightly Included	Slightly Included	Included

ADDITIONAL GRADING INFORMATION

Polish **EXCELLENT**
Symmetry **EXCELLENT**
Fluorescence **NONE**
Inscription(s) **IGI LG792640854**
Comments: This Laboratory Grown Diamond was created by Chemical Vapor Deposition (CVD) growth process. Type IIa



April 24, 2026
IGI Report No LG792640854
ROUND BRILLIANT
8.29 - 8.32 X 5.03 MM
2.20 CARATS
Color Grade **F**
Clarity Grade **VS 1**
Depth **EXCELLENT**
Table **60.5%**
Girdle **62%**
Medium To Slightly Thick (Faceted)
Culet **Pointed**
Polish **EXCELLENT**
Symmetry **EXCELLENT**
Fluorescence **NONE**
Inscriptions(s) **IGI LG792640854**
Comments: This Laboratory Grown Diamond was created by Chemical Vapor Deposition (CVD) growth process. Type IIa