



April 15, 2026

IGI Report Number **LG792639370**

**OVAL BRILLIANT  
LABORATORY GROWN DIAMOND**

**7.36 X 5.13 X 3.09 MM**

Carat Weight	<b>0.72 CARAT</b>
Color Grade	<b>D</b>
Clarity Grade	<b>I.F.</b>
Polish	<b>EXCELLENT</b>
Symmetry	<b>EXCELLENT</b>
Fluorescence	<b>NONE</b>
Inscription(s)	<b>IGI LG792639370</b>

Comments: As Grown - No indication of post-growth treatment. This Laboratory Grown Diamond was created by High Pressure High Temperature (HPHT) growth process. Type II

**LABORATORY GROWN DIAMOND REPORT**

April 15, 2026

IGI Report Number

**LG792639370**

Description

**LABORATORY GROWN DIAMOND**

Shape and Cutting Style

**OVAL BRILLIANT**

Measurements

**7.36 X 5.13 X 3.09 MM**

**GRADING RESULTS**

Carat Weight

**0.72 CARAT**

Color Grade

**D**

Clarity Grade

**INTERNALLY FLAWLESS**

**ADDITIONAL GRADING INFORMATION**

Polish

**EXCELLENT**

Symmetry

**EXCELLENT**

Fluorescence

**NONE**

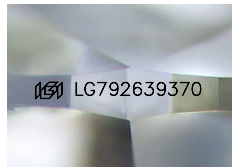
Inscription(s)

**IGI LG792639370**

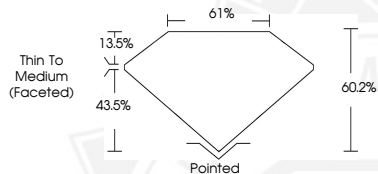
Comments: As Grown - No indication of post-growth treatment.

This Laboratory Grown Diamond was created by High Pressure High Temperature (HPHT) growth process.

Type II



Sample Image Used



April 15, 2026

IGI Report Number **LG792639370**

**OVAL BRILLIANT  
LABORATORY GROWN DIAMOND**

**7.36 X 5.13 X 3.09 MM**

Carat Weight	<b>0.72 CARAT</b>
Color Grade	<b>D</b>
Clarity Grade	<b>I.F.</b>
Polish	<b>EXCELLENT</b>
Symmetry	<b>EXCELLENT</b>
Fluorescence	<b>NONE</b>
Inscription(s)	<b>IGI LG792639370</b>

Comments: As Grown - No indication of post-growth treatment. This Laboratory Grown Diamond was created by High Pressure High Temperature (HPHT) growth process. Type II



THIS DOCUMENT WAS PRODUCED WITH THE FOLLOWING SECURITY MEASURES: SPECIAL DOCUMENT PAPER, INK SCREENS, WATERMARK, BACKGROUND DESIGNS, HOLOGRAM AND OTHER SECURITY FEATURES NOT LISTED AND DO EXCEED DOCUMENT SECURITY INDUSTRY GUIDELINES.