



ELECTRONIC COPY

LG792639175
Report verification at igi.org



April 20, 2026
IGI Report Number **LG792639175**
Description **LABORATORY GROWN DIAMOND**
Shape and Cutting Style **CUSHION MIXED CUT**
Measurements **10.42 X 9.83 X 6.39 MM**
GRADING RESULTS
Carat Weight **6.04 CARATS**
Color Grade **FANCY INTENSE YELLOW**
Clarity Grade **VS 2**

April 20, 2026
IGI Report Number **LG792639175**
Description **LABORATORY GROWN DIAMOND**
Shape and Cutting Style **CUSHION MIXED CUT**
Measurements **10.42 X 9.83 X 6.39 MM**

GRADING RESULTS

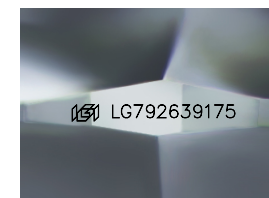
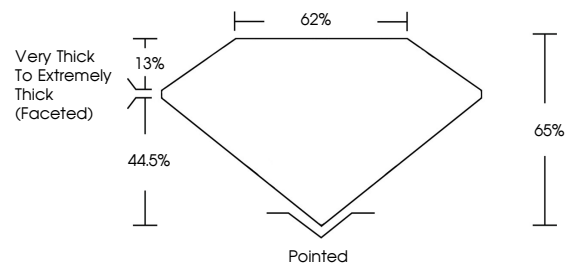
Carat Weight **6.04 CARATS**
Color Grade **FANCY INTENSE YELLOW**
Clarity Grade **VS 2**

ADDITIONAL GRADING INFORMATION

Polish **EXCELLENT**
Symmetry **EXCELLENT**
Fluorescence **NONE**
Inscription(s) **IGI LG792639175**

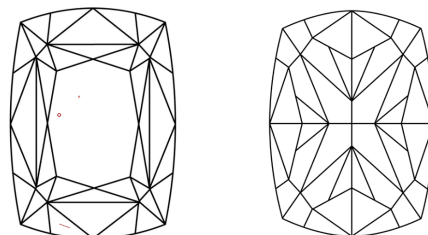
Comments: This Laboratory Grown Diamond was created by Chemical Vapor Deposition (CVD) growth process.

PROPORTIONS



Sample Image Used

CLARITY CHARACTERISTICS



KEY TO SYMBOLS

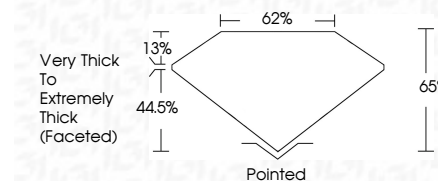
Red symbols indicate internal characteristics.
Green symbols indicate external characteristics.

COLOR

D E F G H I J Faint Very Light Light

CLARITY

FL	IF	VS ¹⁻²	VS ¹⁻²	SI ¹⁻²	I ¹⁻³
Flawless	Internally Flawless	Very Very Slightly Included	Very Slightly Included	Slightly Included	Included



ADDITIONAL GRADING INFORMATION

Polish **EXCELLENT**
Symmetry **EXCELLENT**
Fluorescence **NONE**
Inscription(s) **IGI LG792639175**
Comments: This Laboratory Grown Diamond was created by Chemical Vapor Deposition (CVD) growth process.



IGI



April 20, 2026
IGI Report No LG792639175
CUSHION MIXED CUT
10.42 X 9.83 X 6.39 MM
6.04 CARATS
FANCY INTENSE YELLOW
VS 2
65%
62%
Very Thick to Extremely Thick (Faceted)
Pointed
EXCELLENT
EXCELLENT
NONE
IGI LG792639175
Comments: This Laboratory Grown Diamond was created by Chemical Vapor Deposition (CVD) growth process.