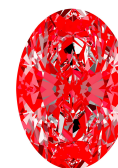




Light Performance Grade: Exceptional



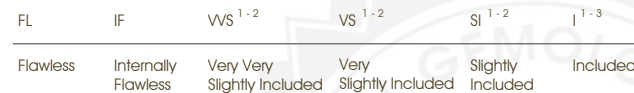
Structured Light Environment Representation



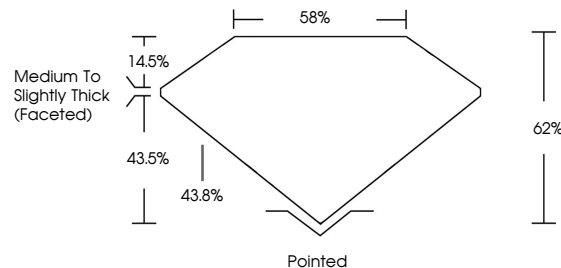
COLOR



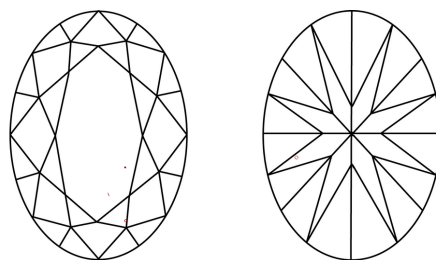
CLARITY



PROPORTIONS



CLARITY CHARACTERISTICS



KEY TO SYMBOLS

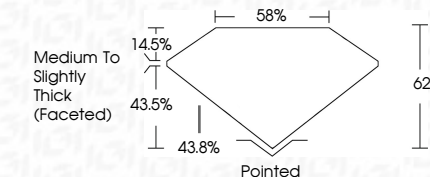
Red symbols indicate internal characteristics.
Green symbols indicate external characteristics.



Sample Image Used



April 16, 2026
IGI Report Number **LG792639056**
Description **LABORATORY GROWN DIAMOND**
Shape and Cutting Style **OVAL BRILLIANT**
Measurements **11.96 X 8.30 X 5.15 MM**
GRADING RESULTS
Carat Weight **3.18 CARATS**
Color Grade **D**
Clarity Grade **VVS 2**



ADDITIONAL GRADING INFORMATION

Polish **EXCELLENT**
Symmetry **EXCELLENT**
Fluorescence **NONE**
Inscription(s) **IGI LG792639056**
Comments: This Laboratory Grown Diamond was created by Chemical Vapor Deposition (CVD) growth process.
Type IIa



IGI

April 16, 2026
IGI Report No LG792639056
OVAL BRILLIANT
11.96 X 8.30 X 5.15 MM
Carat Weight **3.18 CARATS**
Color Grade **D**
Clarity Grade **VVS 2**
Table **58%**
Depth **62%**
Girdle **Medium To Slightly Thick (Faceted)**
Culet **Pointed**
Polish **EXCELLENT**
Symmetry **EXCELLENT**
Fluorescence **NONE**
Inscription(s) **IGI LG792639056**
Comments: This Laboratory Grown Diamond was created by Chemical Vapor Deposition (CVD) growth process.
Type IIa

