



ELECTRONIC COPY

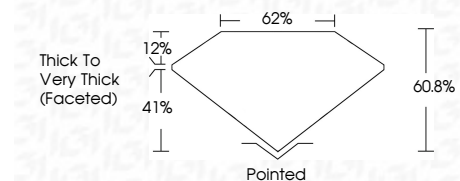
LG792638770
Report verification at igi.org



April 20, 2026
IGI Report Number **LG792638770**
Description **LABORATORY GROWN DIAMOND**

Shape and Cutting Style **PEAR MODIFIED BRILLIANT**
Measurements **8.87 X 5.71 X 3.47 MM**

GRADING RESULTS
Carat Weight **1.26 CARAT**
Color Grade **FANCY INTENSE YELLOW**
Clarity Grade **VVS 2**



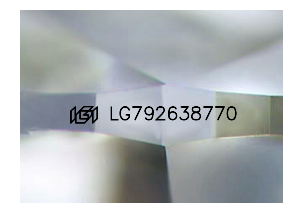
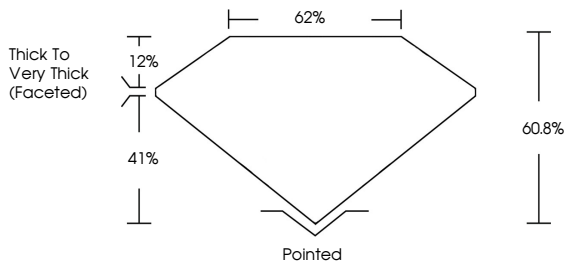
ADDITIONAL GRADING INFORMATION
Polish **EXCELLENT**
Symmetry **EXCELLENT**
Fluorescence **NONE**
Inscription(s) **IGI LG792638770**
Comments: This Laboratory Grown Diamond was created by Chemical Vapor Deposition (CVD) growth process.



April 20, 2026
IGI Report No LG792638770
PEAR MODIFIED BRILLIANT
8.87 X 5.71 X 3.47 MM
1.26 CARAT
FANCY INTENSE YELLOW
VVS 2
60.8%
62%
Thick to Very Thick (Faceted)
Pointed
EXCELLENT
EXCELLENT
NONE
IGI LG792638770
Comments: This Laboratory Grown Diamond was created by Chemical Vapor Deposition (CVD) growth process.

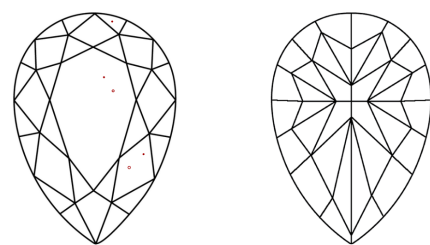
April 20, 2026
IGI Report Number **LG792638770**
Description **LABORATORY GROWN DIAMOND**
Shape and Cutting Style **PEAR MODIFIED BRILLIANT**
Measurements **8.87 X 5.71 X 3.47 MM**
GRADING RESULTS
Carat Weight **1.26 CARAT**
Color Grade **FANCY INTENSE YELLOW**
Clarity Grade **VVS 2**
ADDITIONAL GRADING INFORMATION
Polish **EXCELLENT**
Symmetry **EXCELLENT**
Fluorescence **NONE**
Inscription(s) **IGI LG792638770**
Comments: This Laboratory Grown Diamond was created by Chemical Vapor Deposition (CVD) growth process.

PROPORTIONS



Sample Image Used

CLARITY CHARACTERISTICS



KEY TO SYMBOLS
Red symbols indicate internal characteristics.
Green symbols indicate external characteristics.

COLOR

D	E	F	G	H	I	J	Faint	Very Light	Light
---	---	---	---	---	---	---	-------	------------	-------

CLARITY

FL	IF	VVS ¹⁻²	VS ¹⁻²	SI ¹⁻²	I ¹⁻³
Flawless	Internally Flawless	Very Very Slightly Included	Very Slightly Included	Slightly Included	Included

