



**ELECTRONIC COPY**

LG792634601  
Report verification at igi.org



May 7, 2026

IGI Report Number **LG792634601**

Description **LABORATORY GROWN DIAMOND**

Shape and Cutting Style **ROUND BRILLIANT**

Measurements **7.38 - 7.43 X 4.53 MM**

**GRADING RESULTS**

Carat Weight **1.52 CARAT**

Color Grade **G**

Clarity Grade **VVS 2**

Cut Grade **IDEAL**

May 7, 2026

IGI Report Number **LG792634601**

Description **LABORATORY GROWN DIAMOND**

Shape and Cutting Style **ROUND BRILLIANT**

Measurements **7.38 - 7.43 X 4.53 MM**

**GRADING RESULTS**

Carat Weight **1.52 CARAT**

Color Grade **G**

Clarity Grade **VVS 2**

Cut Grade **IDEAL**

**ADDITIONAL GRADING INFORMATION**

Polish **EXCELLENT**

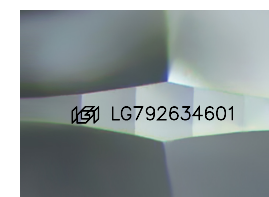
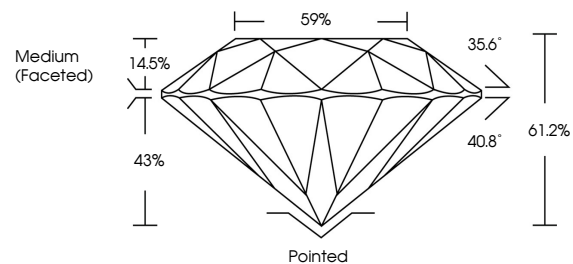
Symmetry **EXCELLENT**

Fluorescence **NONE**

Inscription(s) **IGI LG792634601**

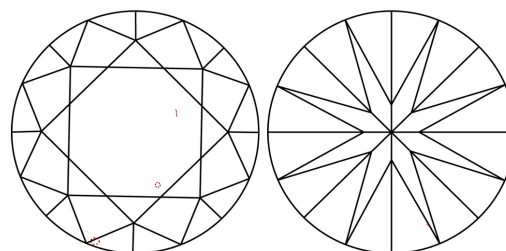
Comments: This Laboratory Grown Diamond was created by Chemical Vapor Deposition (CVD) growth process.  
Type IIa

**PROPORTIONS**



Sample Image Used

**CLARITY CHARACTERISTICS**



**KEY TO SYMBOLS**

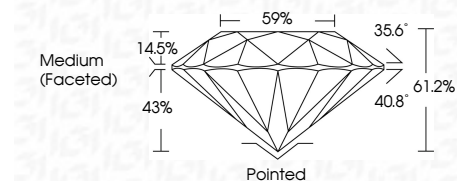
Red symbols indicate internal characteristics.  
Green symbols indicate external characteristics.

**COLOR**

D E F G H I J Faint Very Light Light

**CLARITY**

| FL       | IF                  | VVS <sup>1-2</sup>          | VS <sup>1-2</sup>      | SI <sup>1-2</sup> | I <sup>1-3</sup> |
|----------|---------------------|-----------------------------|------------------------|-------------------|------------------|
| Flawless | Internally Flawless | Very Very Slightly Included | Very Slightly Included | Slightly Included | Included         |



**ADDITIONAL GRADING INFORMATION**

Polish **EXCELLENT**

Symmetry **EXCELLENT**

Fluorescence **NONE**

Inscription(s) **IGI LG792634601**

Comments: This Laboratory Grown Diamond was created by Chemical Vapor Deposition (CVD) growth process.  
Type IIa



**IGI**



|                 |                           |                       |            |   |       |       |       |     |                  |         |           |           |      |                 |
|-----------------|---------------------------|-----------------------|------------|---|-------|-------|-------|-----|------------------|---------|-----------|-----------|------|-----------------|
| May 7, 2026     | IGI Report No LG792634601 | 7.38 - 7.43 X 4.53 MM | 1.52 CARAT | G | VVS 2 | IDEAL | 61.2% | 59% | Medium (Faceted) | Pointed | EXCELLENT | EXCELLENT | NONE | IGI LG792634601 |
| ROUND BRILLIANT |                           |                       |            |   |       |       |       |     |                  |         |           |           |      |                 |

Comments: This Laboratory Grown Diamond was created by Chemical Vapor Deposition (CVD) growth process.  
Type IIa