



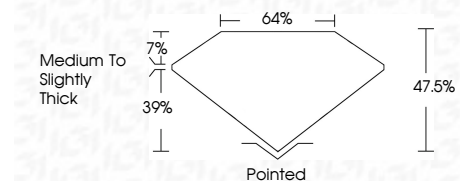
ELECTRONIC COPY

LG792634326
Report verification at igi.org



May 5, 2026
IGI Report Number **LG792634326**
Description **LABORATORY GROWN DIAMOND**
Shape and Cutting Style **MODIFIED TRILLIANT CUT**
Measurements **7.70 X 8.77 X 4.17 MM**

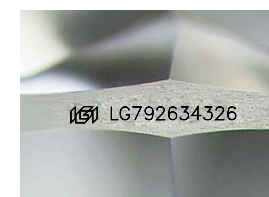
GRADING RESULTS
Carat Weight **1.26 CARAT**
Color Grade **D**
Clarity Grade **VVS 2**



ADDITIONAL GRADING INFORMATION
Polish **EXCELLENT**
Symmetry **EXCELLENT**
Fluorescence **NONE**
Inscription(s) **IGI LG792634326**
Comments: As Grown - No indication of post-growth treatment.
This Laboratory Grown Diamond was created by High Pressure High Temperature (HPHT) growth process.
Type II

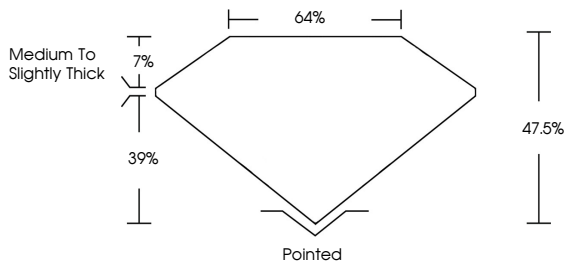


May 5, 2026
IGI Report No LG792634326
MODIFIED TRILLIANT CUT
7.70 X 8.77 X 4.17 MM
1.26 CARAT
D
VVS 2
47.5%
39%
Medium to Slightly Thick
Pointed
EXCELLENT
EXCELLENT
NONE
IGI LG792634326
Comments: As Grown - No indication of post-growth treatment.
This Laboratory Grown Diamond was created by High Pressure High Temperature (HPHT) growth process.
Type II

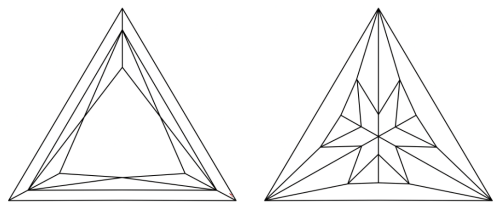


Sample Image Used

PROPORTIONS



CLARITY CHARACTERISTICS



KEY TO SYMBOLS
Red symbols indicate internal characteristics.
Green symbols indicate external characteristics.

COLOR

D	E	F	G	H	I	J	Faint	Very Light	Light
---	---	---	---	---	---	---	-------	------------	-------

CLARITY

FL	IF	VVS ¹⁻²	VS ¹⁻²	SI ¹⁻²	I ¹⁻³
Flawless	Internally Flawless	Very Very Slightly Included	Very Slightly Included	Slightly Included	Included

