



ELECTRONIC COPY

LG792634312
Report verification at igi.org



May 5, 2026

IGI Report Number **LG792634312**

Description **LABORATORY GROWN DIAMOND**

Shape and Cutting Style **PEAR BRILLIANT**

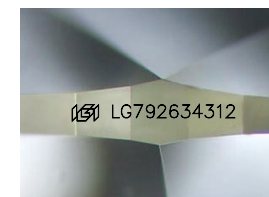
Measurements **9.62 X 6.39 X 3.87 MM**

GRADING RESULTS

Carat Weight **1.40 CARAT**

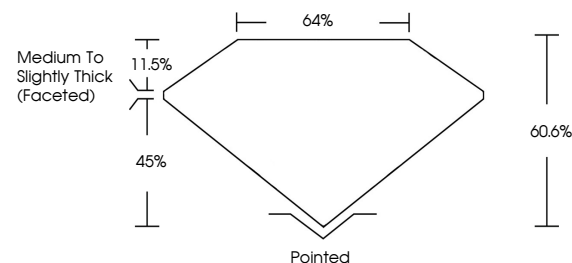
Color Grade **F**

Clarity Grade **VS 2**

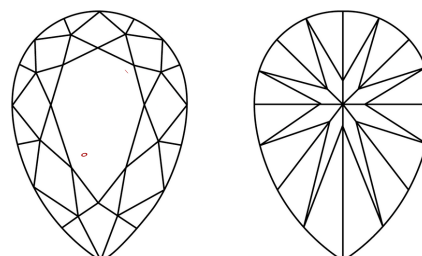


Sample Image Used

PROPORTIONS



CLARITY CHARACTERISTICS



KEY TO SYMBOLS

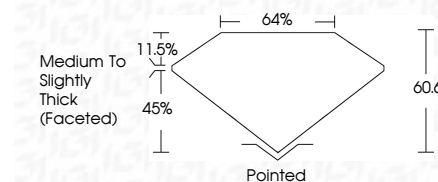
Red symbols indicate internal characteristics.
Green symbols indicate external characteristics.

COLOR

D E F G H I J Faint Very Light Light

CLARITY

FL	IF	VS ¹⁻²	VS ¹⁻²	SI ¹⁻²	I ¹⁻³
Flawless	Internally Flawless	Very Very Slightly Included	Very Slightly Included	Slightly Included	Included



ADDITIONAL GRADING INFORMATION

Polish **EXCELLENT**

Symmetry **EXCELLENT**

Fluorescence **NONE**

Inscription(s) **IGI LG792634312**

Comments: This Laboratory Grown Diamond was created by Chemical Vapor Deposition (CVD) growth process. Type IIa



IGI



May 5, 2026	1.40 CARAT	F	VS 2	60.6%	45%	Pointed	EXCELLENT	NONE	IGI LG792634312
IGI Report No LG792634312	9.62 X 6.39 X 3.87 MM	PEAR BRILLIANT	Medium to Slightly Thick (Faceted)	Polish	Symmetry	Fluorescence	Inscription(s)	Comments: This Laboratory Grown Diamond was created by Chemical Vapor Deposition (CVD) growth process. Type IIa	