



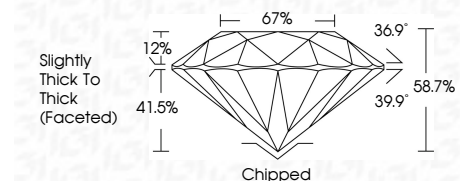
**ELECTRONIC COPY**

LG792634306  
Report verification at igi.org



May 5, 2026  
IGI Report Number **LG792634306**  
Description **LABORATORY GROWN DIAMOND**  
Shape and Cutting Style **ROUND BRILLIANT**  
Measurements **7.26 - 7.34 X 4.29 MM**

**GRADING RESULTS**  
Carat Weight **1.48 CARAT**  
Color Grade **H**  
Clarity Grade **VS 2**  
Cut Grade **GOOD**



**ADDITIONAL GRADING INFORMATION**  
Polish **GOOD**  
Symmetry **VERY GOOD**  
Fluorescence **NONE**  
Inscription(s) **IGI LG792634306**  
Comments: This Laboratory Grown Diamond was created by Chemical Vapor Deposition (CVD) growth process. Type IIa



May 5, 2026  
IGI Report No LG792634306  
**ROUND BRILLIANT**  
7.26 - 7.34 X 4.29 MM  
1.48 CARAT  
H  
VS 2  
GOOD  
88.7%  
67%  
Slightly Thick To Thick (Faceted)  
Chipped  
GOOD  
VERY GOOD  
NONE  
IGI LG792634306  
Comments: This Laboratory Grown Diamond was created by Chemical Vapor Deposition (CVD) growth process. Type IIa

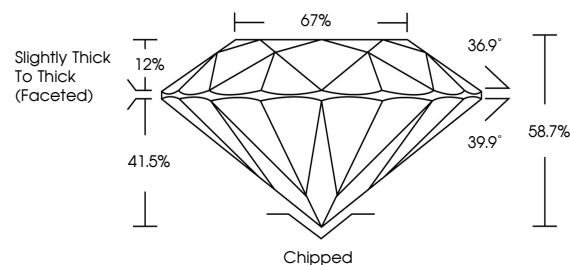
May 5, 2026  
IGI Report Number **LG792634306**  
Description **LABORATORY GROWN DIAMOND**  
Shape and Cutting Style **ROUND BRILLIANT**  
Measurements **7.26 - 7.34 X 4.29 MM**

**GRADING RESULTS**  
Carat Weight **1.48 CARAT**  
Color Grade **H**  
Clarity Grade **VS 2**  
Cut Grade **GOOD**

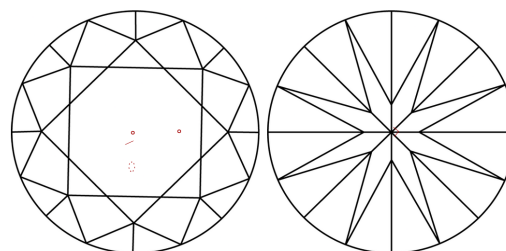
**ADDITIONAL GRADING INFORMATION**  
Polish **GOOD**  
Symmetry **VERY GOOD**  
Fluorescence **NONE**  
Inscription(s) **IGI LG792634306**

Comments: This Laboratory Grown Diamond was created by Chemical Vapor Deposition (CVD) growth process. Type IIa

**PROPORTIONS**

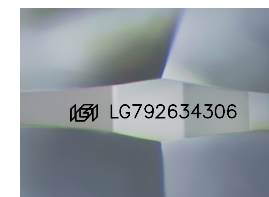


**CLARITY CHARACTERISTICS**



**KEY TO SYMBOLS**

Red symbols indicate internal characteristics.  
Green symbols indicate external characteristics.



Sample Image Used

**COLOR**

D E F G H I J Faint Very Light Light

**CLARITY**

FL	IF	VS <sup>1-2</sup>	VS <sup>1-2</sup>	SI <sup>1-2</sup>	I <sup>1-3</sup>
Flawless	Internally Flawless	Very Very Slightly Included	Very Slightly Included	Slightly Included	Included

