



ELECTRONIC COPY

LG792634190
Report verification at igi.org



May 6, 2026
IGI Report Number **LG792634190**
Description **LABORATORY GROWN DIAMOND**
Shape and Cutting Style **ROUND BRILLIANT**
Measurements **8.72 - 8.76 X 5.49 MM**
GRADING RESULTS
Carat Weight **2.57 CARATS**
Color Grade **FANCY INTENSE GREEN**
Clarity Grade **VS 2**
Cut Grade **VERY GOOD**

May 6, 2026
IGI Report Number **LG792634190**
Description **LABORATORY GROWN DIAMOND**
Shape and Cutting Style **ROUND BRILLIANT**
Measurements **8.72 - 8.76 X 5.49 MM**

GRADING RESULTS

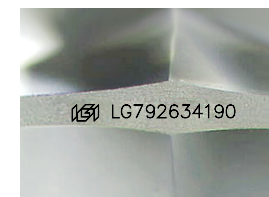
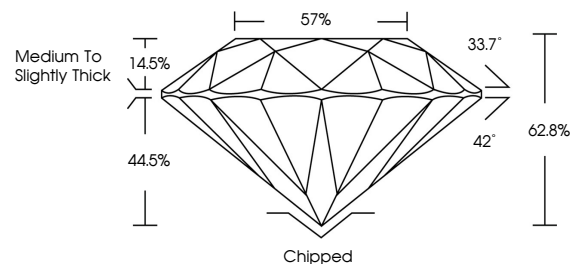
Carat Weight **2.57 CARATS**
Color Grade **FANCY INTENSE GREEN**
Clarity Grade **VS 2**
Cut Grade **VERY GOOD**

ADDITIONAL GRADING INFORMATION

Polish **GOOD**
Symmetry **VERY GOOD**
Fluorescence **VERY SLIGHT**
Inscription(s) **LG792634190**

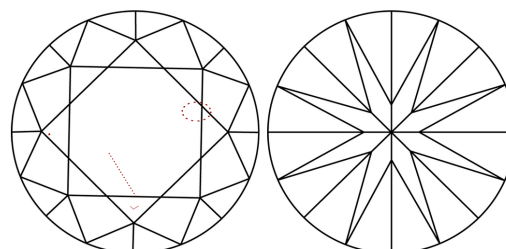
Comments: This Laboratory Grown Diamond was created by Chemical Vapor Deposition (CVD) growth process.
Indications of post-growth treatment.

PROPORTIONS



Sample Image Used

CLARITY CHARACTERISTICS



KEY TO SYMBOLS

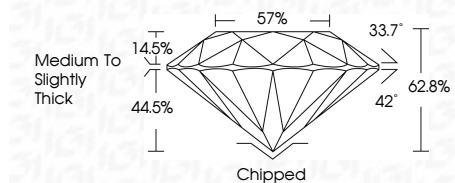
Red symbols indicate internal characteristics.
Green symbols indicate external characteristics.

COLOR

D E F G H I J Faint Very Light Light

CLARITY

FL	IF	VS ¹⁻²	VS ¹⁻²	SI ¹⁻²	I ¹⁻³
Flawless	Internally Flawless	Very Very Slightly Included	Very Slightly Included	Slightly Included	Included



ADDITIONAL GRADING INFORMATION

Polish **GOOD**
Symmetry **VERY GOOD**
Fluorescence **VERY SLIGHT**
Inscription(s) **LG792634190**
Comments: This Laboratory Grown Diamond was created by Chemical Vapor Deposition (CVD) growth process.
Indications of post-growth treatment.



IGI



May 6, 2026
IGI Report No **LG792634190**
ROUND BRILLIANT
8.72 - 8.76 X 5.49 MM
Carat Weight **2.57 CARATS**
Color Grade **FANCY INTENSE GREEN**
Clarity Grade **VS 2**
Depth **VERY GOOD**
Table **62.8%**
Girdle **57%**
Culet **Medium to Slightly Thick**
Polish **Chipped**
Symmetry **GOOD**
Fluorescence **VERY GOOD**
Inscription(s) **VERY SLIGHT**
 IGI LG792634190
Comments: This Laboratory Grown Diamond was created by Chemical Vapor Deposition (CVD) growth process.
Indications of post-growth treatment.