



**ELECTRONIC COPY**

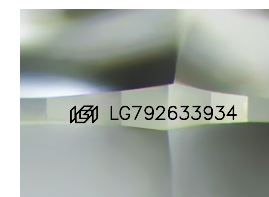
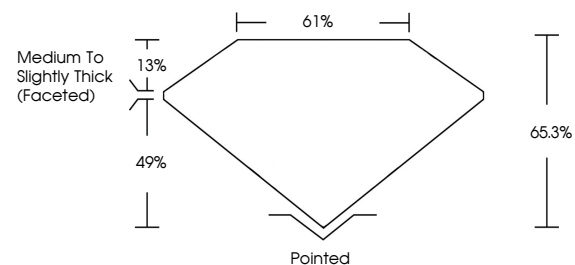
LG792633934  
Report verification at igi.org



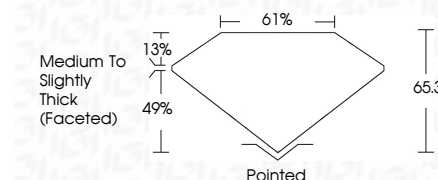
May 15, 2026  
IGI Report Number **LG792633934**  
Description **LABORATORY GROWN DIAMOND**  
Shape and Cutting Style **SQUARE CUSHION MODIFIED BRILLIANT**  
Measurements **8.11 X 7.87 X 5.14 MM**  
**GRADING RESULTS**  
Carat Weight **2.57 CARATS**  
Color Grade **FANCY VIVID BROWN RED**  
Clarity Grade **VVS 2**

May 15, 2026  
IGI Report Number **LG792633934**  
Description **LABORATORY GROWN DIAMOND**  
Shape and Cutting Style **SQUARE CUSHION MODIFIED BRILLIANT**  
Measurements **8.11 X 7.87 X 5.14 MM**  
**GRADING RESULTS**  
Carat Weight **2.57 CARATS**  
Color Grade **FANCY VIVID BROWN RED**  
Clarity Grade **VVS 2**

**PROPORTIONS**



Sample Image Used



**ADDITIONAL GRADING INFORMATION**

Polish **VERY GOOD**  
Symmetry **EXCELLENT**  
Fluorescence **VERY SLIGHT**  
Inscription(s) **IGI LG792633934**

Comments: This Laboratory Grown Diamond was created by Chemical Vapor Deposition (CVD) growth process.  
Indications of post-growth treatment.

**ADDITIONAL GRADING INFORMATION**

Polish **VERY GOOD**  
Symmetry **EXCELLENT**  
Fluorescence **VERY SLIGHT**  
Inscription(s) **IGI LG792633934**  
Comments: This Laboratory Grown Diamond was created by Chemical Vapor Deposition (CVD) growth process.  
Indications of post-growth treatment.

**COLOR**

D E F G H I J Faint Very Light Light

**CLARITY**

FL	IF	VS <sup>1-2</sup>	VS <sup>1-2</sup>	SI <sup>1-2</sup>	I <sup>1-3</sup>
Flawless	Internally Flawless	Very Very Slightly Included	Very Slightly Included	Slightly Included	Included



**IGI**



May 15, 2026  
IGI Report No **LG792633934**  
**SQUARE CUSHION MODIFIED BRILLIANT**  
**8.11 X 7.87 X 5.14 MM**  
Carat Weight **2.57 CARATS**  
Color Grade **FANCY VIVID BROWN RED**  
Clarity Grade **VVS 2**  
Table **61%**  
Depth **49%**  
Girdle **Medium to Slightly Thick (Faceted)**  
Culet **Pointed**  
Polish **VERY GOOD**  
Symmetry **EXCELLENT**  
Fluorescence **VERY SLIGHT**  
Inscription(s) **IGI LG792633934**  
Comments: This Laboratory Grown Diamond was created by Chemical Vapor Deposition (CVD) growth process.  
Indications of post-growth treatment.