



**ELECTRONIC COPY**

**LABORATORY GROWN DIAMOND REPORT**

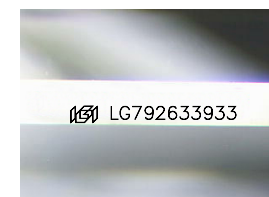
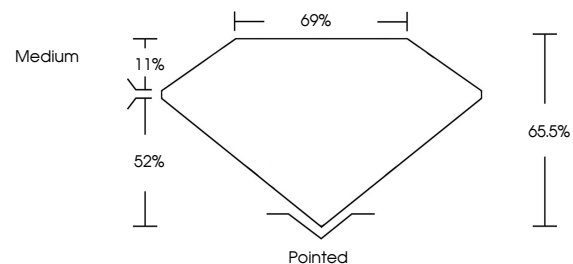
May 15, 2026  
IGI Report Number **LG792633933**  
Description **LABORATORY GROWN DIAMOND**  
Shape and Cutting Style **PRINCESS CUT**  
Measurements **6.65 X 6.58 X 4.31 MM**  
**GRADING RESULTS**  
Carat Weight **1.60 CARAT**  
Color Grade **FANCY VIVID BROWN RED**  
Clarity Grade **VVS 1**

**ADDITIONAL GRADING INFORMATION**

Polish **VERY GOOD**  
Symmetry **EXCELLENT**  
Fluorescence **NONE**  
Inscription(s) **IGI LG792633933**

Comments: This Laboratory Grown Diamond was created by Chemical Vapor Deposition (CVD) growth process.  
Indications of post-growth treatment.

**PROPORTIONS**



Sample Image Used

**COLOR**

D E F G H I J Faint Very Light Light

**CLARITY**

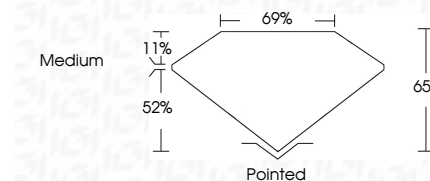
FL	IF	VS <sup>1-2</sup>	VS <sup>1-2</sup>	SI <sup>1-2</sup>	I <sup>1-3</sup>
Flawless	Internally Flawless	Very Very Slightly Included	Very Slightly Included	Slightly Included	Included



May 15, 2026  
IGI Report Number **LG792633933**  
Description **LABORATORY GROWN DIAMOND**  
Shape and Cutting Style **PRINCESS CUT**  
Measurements **6.65 X 6.58 X 4.31 MM**  
**GRADING RESULTS**  
Carat Weight **1.60 CARAT**  
Color Grade **FANCY VIVID BROWN RED**  
Clarity Grade **VVS 1**

**ADDITIONAL GRADING INFORMATION**

Polish **VERY GOOD**  
Symmetry **EXCELLENT**  
Fluorescence **NONE**  
Inscription(s) **IGI LG792633933**  
Comments: This Laboratory Grown Diamond was created by Chemical Vapor Deposition (CVD) growth process.  
Indications of post-growth treatment.



May 15, 2026  
IGI Report No LG792633933  
PRINCESS CUT  
1.60 CARAT  
6.65 X 6.58 X 4.31 MM  
FANCY VIVID BROWN RED  
VVS 1  
65.5%  
69%  
Medium  
Polished  
VERY GOOD  
EXCELLENT  
NONE  
IGI LG792633933  
Comments: This Laboratory Grown Diamond was created by Chemical Vapor Deposition (CVD) growth process.  
Indications of post-growth treatment.