



ELECTRONIC COPY

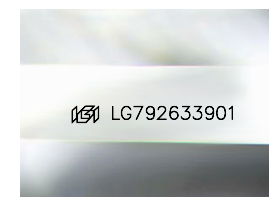
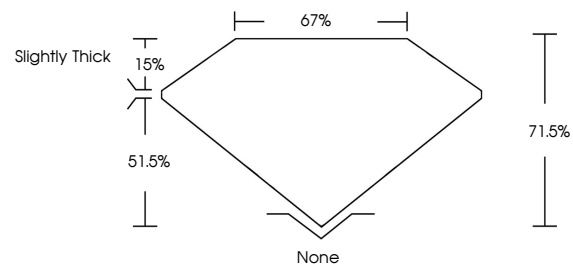
LG792633901
Report verification at igi.org



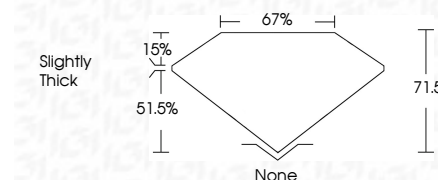
May 6, 2026
IGI Report Number **LG792633901**
Description **LABORATORY GROWN DIAMOND**
Shape and Cutting Style **CUT CORNERED
RECTANGULAR MODIFIED
BRILLIANT**
Measurements **8.65 X 5.96 X 4.26 MM**
GRADING RESULTS
Carat Weight **2.16 CARATS**
Color Grade **FANCY VIVID BROWNISH
PINK**
Clarity Grade **VVS 2**

May 6, 2026
IGI Report Number **LG792633901**
Description **LABORATORY GROWN DIAMOND**
Shape and Cutting Style **CUT CORNERED RECTANGULAR
MODIFIED BRILLIANT**
Measurements **8.65 X 5.96 X 4.26 MM**
GRADING RESULTS
Carat Weight **2.16 CARATS**
Color Grade **FANCY VIVID BROWNISH PINK**
Clarity Grade **VVS 2**

PROPORTIONS



Sample Image Used



ADDITIONAL GRADING INFORMATION

Polish **EXCELLENT**
Symmetry **VERY GOOD**
Fluorescence **SLIGHT**
Inscription(s) **IGI LG792633901**

Comments: This Laboratory Grown Diamond was created by Chemical Vapor Deposition (CVD) growth process.
Indications of post-growth treatment.

ADDITIONAL GRADING INFORMATION

Polish **EXCELLENT**
Symmetry **VERY GOOD**
Fluorescence **SLIGHT**
Inscription(s) **IGI LG792633901**

Comments: This Laboratory Grown Diamond was created by Chemical Vapor Deposition (CVD) growth process.
Indications of post-growth treatment.

COLOR

D E F G H I J Faint Very Light Light

CLARITY

FL	IF	VVS ¹⁻²	VS ¹⁻²	SI ¹⁻²	I ¹⁻³
Flawless	Internally Flawless	Very Very Slightly Included	Very Slightly Included	Slightly Included	Included



IGI



May 6, 2026
IGI Report No. LG792633901
CUT CORNERED RECT. MODIFIED BRILLIANT
8.65 X 5.96 X 4.26 MM
2.16 CARATS
FANCY VIVID BROWNISH PINK
Color Grade
FANCY VIVID BROWNISH PINK
VVS 2
Clarity Grade
VVS 2
Depth
71.05%
Table
67%
Girdle
Slightly Thick
Culet
None
Polish
EXCELLENT
Symmetry
VERY GOOD
Fluorescence
SLIGHT
Inscription(s)
IGI LG792633901

Comments: This Laboratory Grown Diamond was created by Chemical Vapor Deposition (CVD) growth process.
Indications of post-growth treatment.