



**ELECTRONIC COPY**

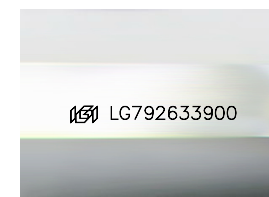
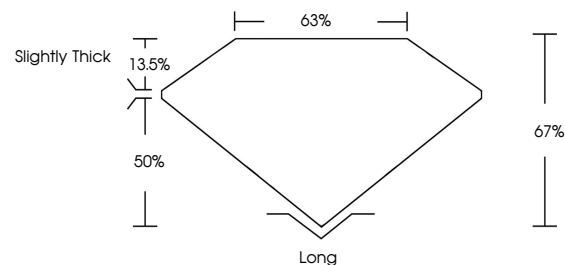
LG792633900  
Report verification at igi.org



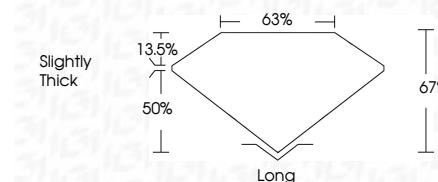
May 6, 2026  
IGI Report Number **LG792633900**  
Description **LABORATORY GROWN DIAMOND**  
Shape and Cutting Style **EMERALD CUT**  
Measurements **9.63 X 6.39 X 4.28 MM**  
**GRADING RESULTS**  
Carat Weight **2.57 CARATS**  
Color Grade **FANCY VIVID PINK**  
Clarity Grade **VS 1**

May 6, 2026  
IGI Report Number **LG792633900**  
Description **LABORATORY GROWN DIAMOND**  
Shape and Cutting Style **EMERALD CUT**  
Measurements **9.63 X 6.39 X 4.28 MM**  
**GRADING RESULTS**  
Carat Weight **2.57 CARATS**  
Color Grade **FANCY VIVID PINK**  
Clarity Grade **VS 1**

**PROPORTIONS**



Sample Image Used



**ADDITIONAL GRADING INFORMATION**

Polish **VERY GOOD**  
Symmetry **EXCELLENT**  
Fluorescence **SLIGHT**  
Inscription(s) **IGI LG792633900**

Comments: This Laboratory Grown Diamond was created by Chemical Vapor Deposition (CVD) growth process.  
Indications of post-growth treatment.

Secondary color: Brown

**ADDITIONAL GRADING INFORMATION**

Polish **VERY GOOD**  
Symmetry **EXCELLENT**  
Fluorescence **SLIGHT**  
Inscription(s) **IGI LG792633900**

Comments: This Laboratory Grown Diamond was created by Chemical Vapor Deposition (CVD) growth process.  
Indications of post-growth treatment.

Secondary color: Brown

**COLOR**

D E F G H I J Faint Very Light Light

**CLARITY**

FL	IF	VS <sup>1-2</sup>	VS <sup>1-2</sup>	SI <sup>1-2</sup>	I <sup>1-3</sup>
Flawless	Internally Flawless	Very Very Slightly Included	Very Slightly Included	Slightly Included	Included



**IGI**



May 6, 2026  
IGI Report No **LG792633900**  
**EMERALD CUT**  
**9.63 X 6.39 X 4.28 MM**  
Carat Weight **2.57 CARATS**  
Color Grade **FANCY VIVID PINK**  
Clarity Grade **VS 1**  
Depth **67%**  
Table **63%**  
Girdle **Slightly Thick**  
Culet **Long**  
Polish **VERY GOOD**  
Symmetry **EXCELLENT**  
Fluorescence **SLIGHT**  
Inscription(s) **IGI LG792633900**  
Comments: This Laboratory Grown Diamond was created by Chemical Vapor Deposition (CVD) growth process.  
Indications of post-growth treatment.  
Secondary color: Brown